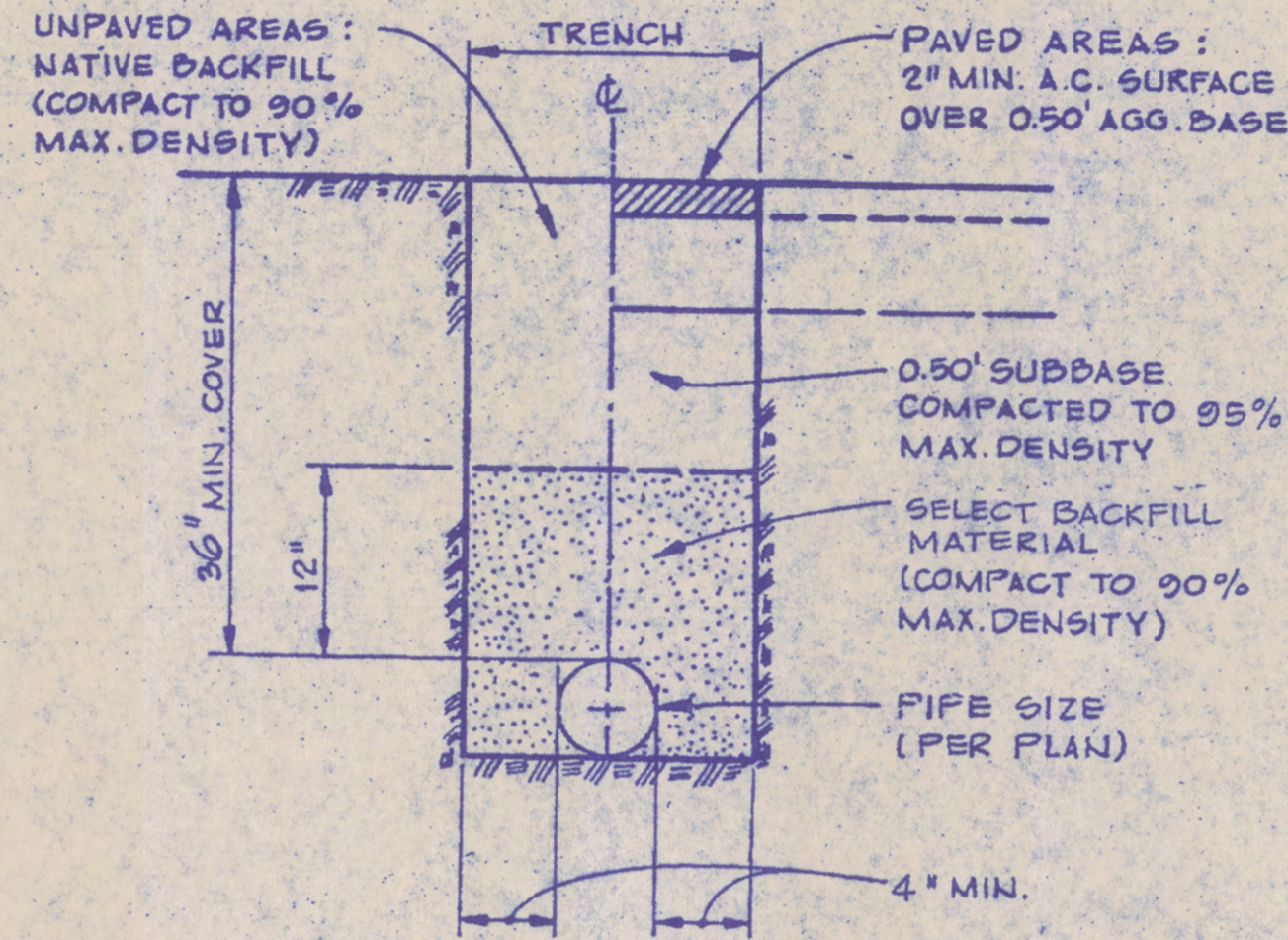
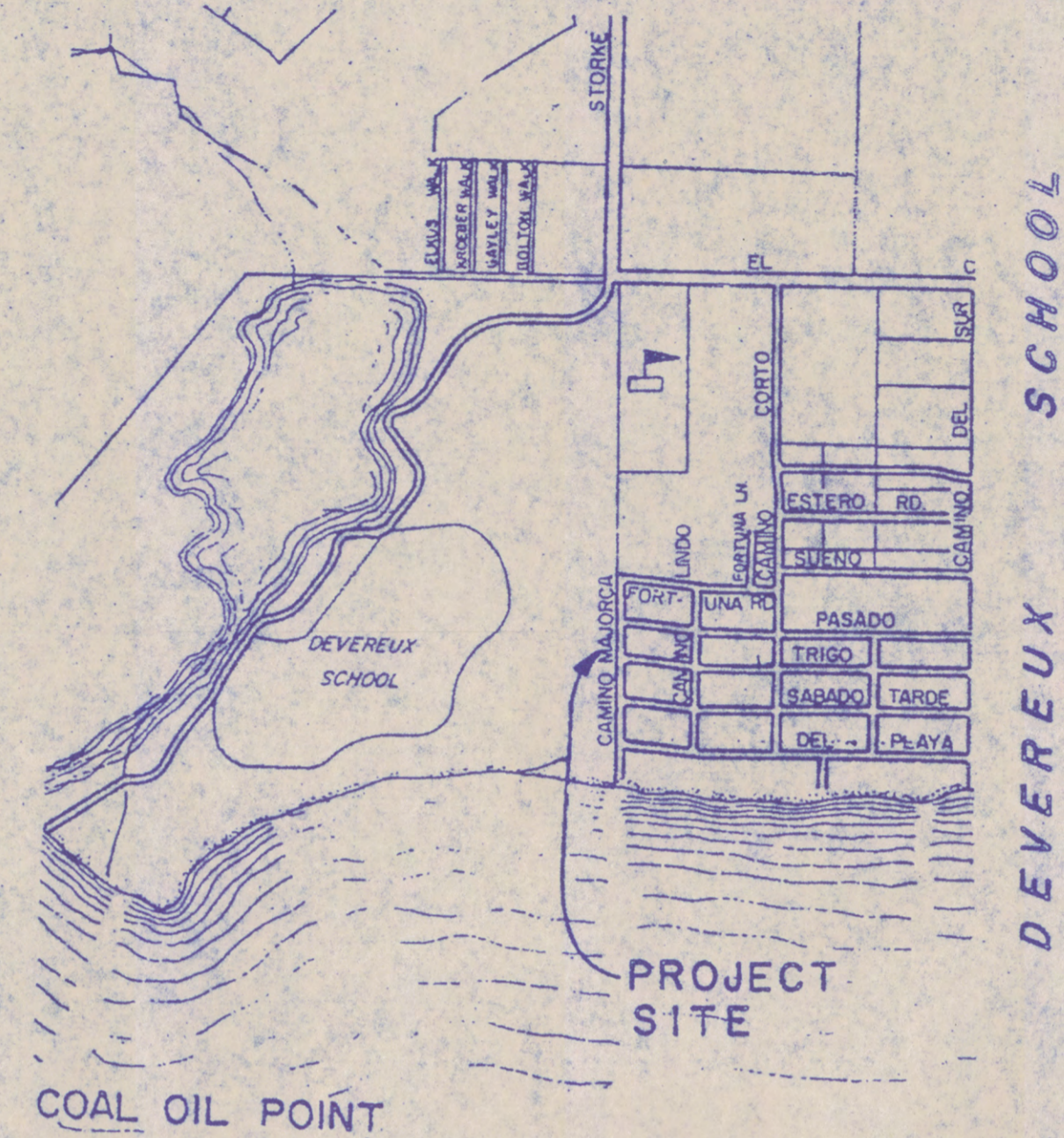


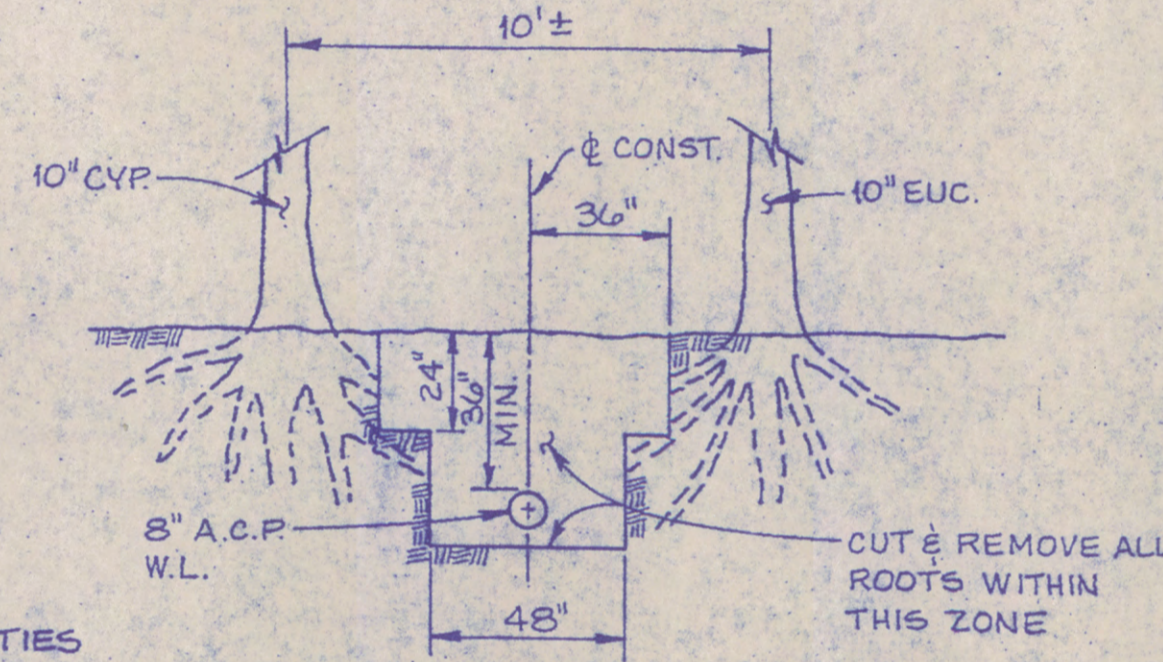
PROFILE
SCALE: HORIZ. 1" = 40'
VERT. 1" = 4'



TRENCHING DETAIL
SCALE: 1" = 1'



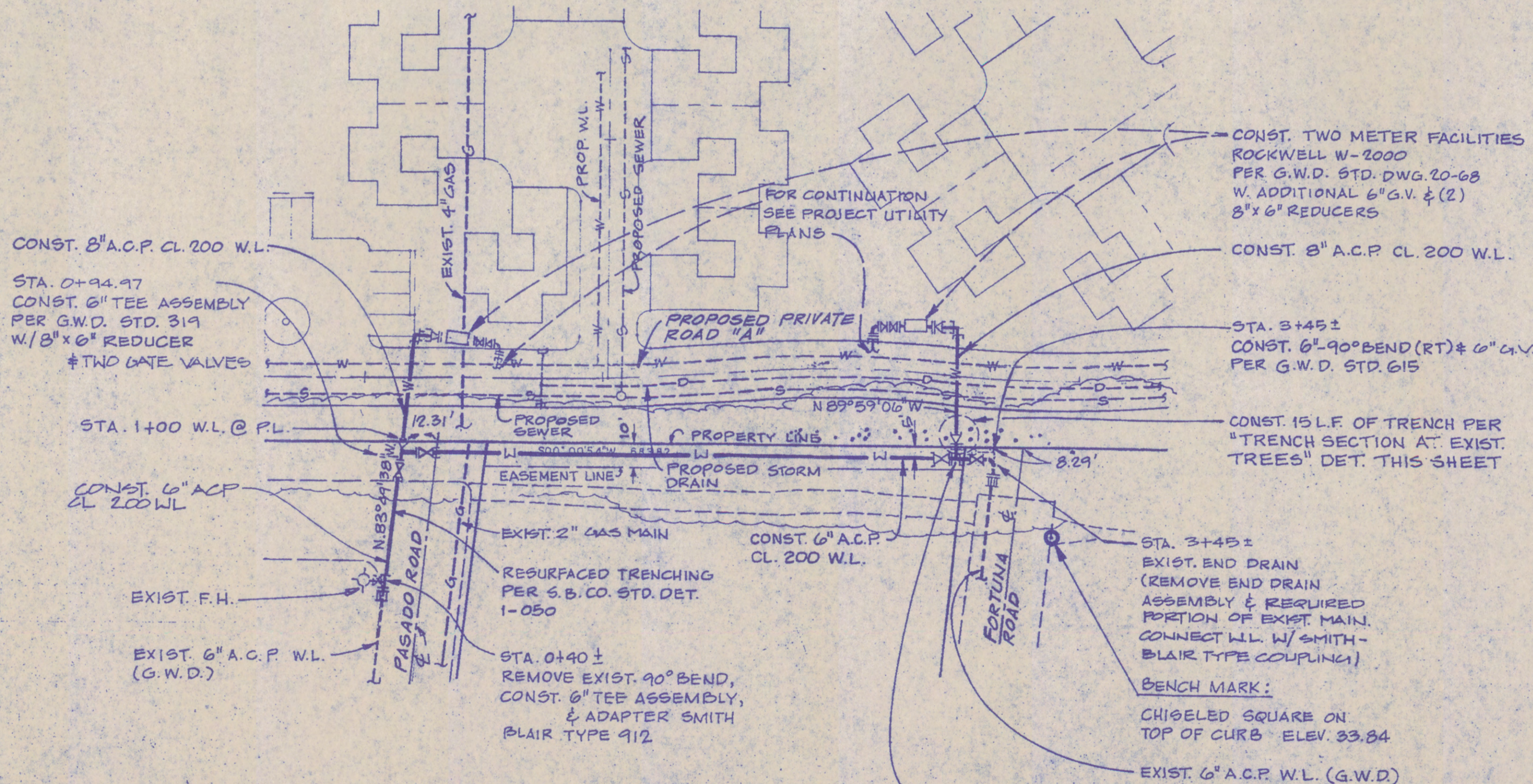
VICINITY MAP
SCALE: 1" = 1,000'



TRENCH SECTION AT EXIST. TREES
SCALE: 1" = 4'

NOTES

1. ALL WATER WORKS SHALL BE DONE IN ACCORDANCE WITH THE "STANDARD PLANS AND SPECIFICATIONS" OF THE GOLETA WATER DISTRICT.
2. PRIOR TO INSTALLATION OF WATER MAINS, STREETS AND ALL AREAS TO BE PAVED SHALL BE BROUGHT TO WITHIN 5 INCHES OF SUBGRADE, AND SHALL BE FREE OF DEBRIS AND OTHER ENCUMBRANCES. SUBGRADE IS DEFINED AS THAT ELEVATION EQUAL TO FINISH STREET SURFACE ELEVATION LESS THE THICKNESS OF PAVEMENT AND BASE MATERIAL.
3. LAY NO. 8 CABLE ON TOP OF NEW A/C PIPE.



PLAN SCALE 1" = 40'

COPIED
DEC 12 1985
FIELD & SMITH

DESIGNED BY R.N.G.	WATER MAIN EXTENSION	
CHECKED BY D.G.L.		
DATE 8-15-85	REVISIONS	U.C.S.B. FACULTY HOUSING PROJECT GOLETA WATER DISTRICT COUNTY OF SANTA BARBARA, CALIFORNIA R.C.E. 32,187 DATE 7-23-85 Penfield & Smith ENGINEERS INC. 111 EAST VICTORIA ST., SANTA BARBARA, CAL. 93101 • 805-963-9337
DESCRIPTION	APPROVED	
LOCATION	R.N.S.	
REVISIONS	R.N.S.	
DATE 12-5-85	SECOND METER ADDED	SCALES AS NOTED
APPROVED	BY	SHEET 1 OF 1 SHEETS
DATE	MGR. - GOLETA WATER DISTRICT	