

956 WEST CAMPOS LANE

8/4/16 H. Nelson

DPS

# VALVE CHART – WEST CAMPUS POINT

UNIT# 956

VALVE POSITION FOR #	1	2	3	4	5	
GAS HEATER ONLY						
SOLAR PRE-HEAT TO GAS HEATER						

**Note: orientation relative to up/down, not relative to pipe direction**

- ROUND BLUE HANDELED VALVES SHOULD NOT BE CLOSED
- PUMP SHOULD NOT RUN AT NIGHT UNLESS BELOW 40 DEG. F. WHEN THE LIGHT IS ON, THE PUMP IS RUNNING.

# In Utility Room



Shut Off  
Valves

#1

Solar  
Pump

From  
Roof

#2

P,T Relief  
Valve B

To Roof

2 Way Ball  
Valves  
#1

#2 is  
Behind

3 Way  
Ball Valve  
#3

House Hot  
Water  
Water  
Supply  
from  
Carport

#4

2 Way Ball  
Valves  
#5

P,T Relief  
Valve A

Drain to  
Study  
Patio  
(1 of 2)

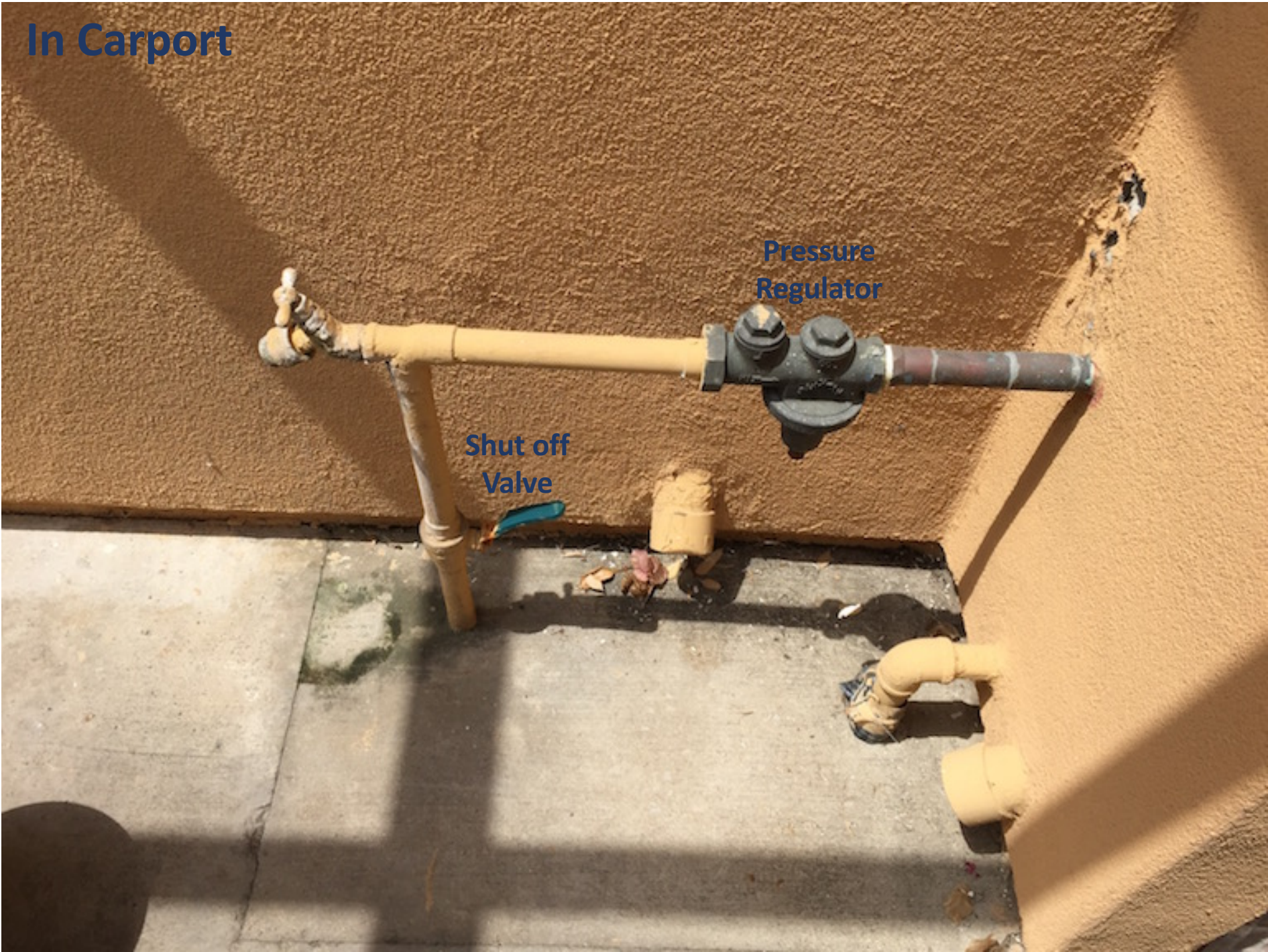
Solar Pre-Heated  
Water Tank

Gas Heated  
Water Tank

**In Carport**

**Pressure  
Regulator**

**Shut off  
Valve**





**On Roof**

## In 957 Study Room Patio



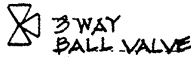
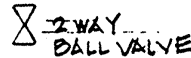
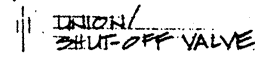
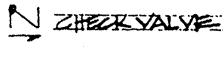

# From WCP Blueprints

SCALE  
NONE

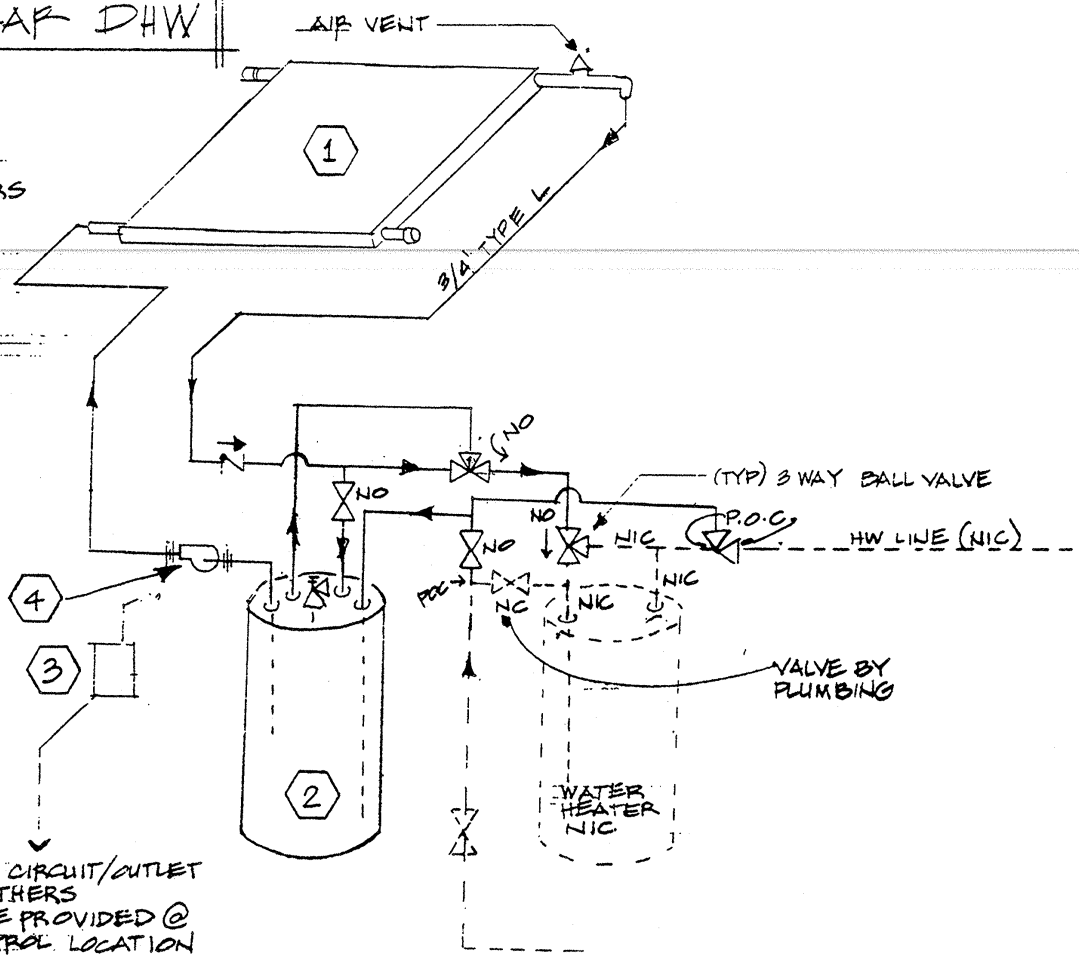
13

UCSB FACULTY  
HOUSING -  
TYP. SOLAR DHW

- NOTES
- 1. HW HEATER BY OTHERS
  - 2. ELECTRICAL SUPPLY BY OTHERS
  - 3. CONNECTIONS TO WATER HEATER BY OTHERS

- LEGEND
-  3WAY BALL VALVE
  -  2WAY BALL VALVE
  -  UNION/SHUT-OFF VALVE
  -  CHECK VALVE
  -  T&P RELIEF VALVE

120V CIRCUIT/OUTLET BY OTHERS TO BE PROVIDED @ CONTROL LOCATION



SOLAR SCHEMATIC - EACH UNIT

SCALE  
NONE

15