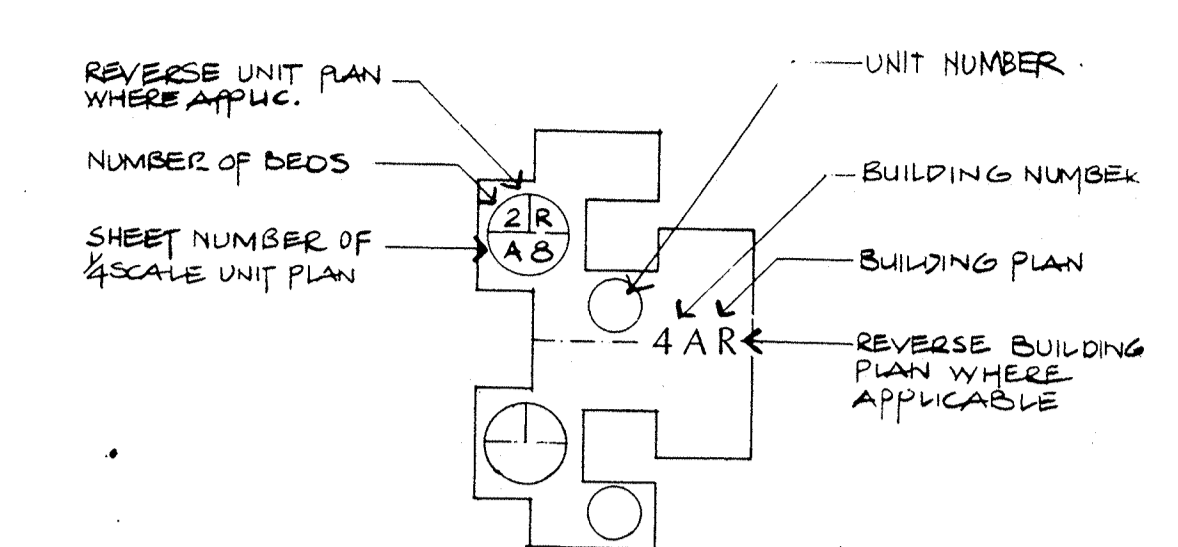


KEY



| FOR BUILDING PLAN | SEE SHEET NUMBER |
|-------------------|------------------|
| A | A1 |
| B | A2 |
| C | A3 |
| D | A4 |
| E | A5 |
| F | A6, A7 |

| | | |
|---------------|--|---|
| T | TRASH ENCLOSURE | SEE DETAIL (3) (2-3) |
| H | HANDICAP PARKING | SEE DETAIL (2) (2-3) |
| B | BARBECUE | SEE DETAIL (2) (A23) |
| C | BICYCLE RACK | SEE DETAIL (5) (2-3) |
| [Hatched Box] | LOWERED GARAGE/CARPOR W/ STEPS TO ADJUST GRAPE | SEE CIVIL DWGS AND ARCHITECTURAL FLOORPLANS |
| M | SPANS MAILBOX FOR EACH CLUSTER | SEE DETAIL (2) (A22) |
| S | BENCH SEATING | SEE DETAIL (2) (A4) |



- 8/27/85 Ed. ELIMINATE STRIPING
- 8/27/85 Ed. NOTE ACCESS ROAD
- 8/28/85 Ed. BIKE RACK LOCATION
- 7/15/85 Ed. CHANGE OF ELEV. @ GARAGE
- 7/15/85 Ed. BIKE LANE

| no. | date | by |
|-----|------|----|
| | | |

IBI
Group
Architects and Planners
L. Paul Zafra
2888 E. Coast Highway
Suite 503
Corona del Mar, California
92625
(714) 675-2390

consultants

project title

U · C · S · B

SUBMITTAL
FOR COASTAL COMMISSION

sheet title
SITE PLAN & BUILDING KEYS

| | | | |
|-------------|------|-----------|---------|
| scale | 1:40 | date | 4/28/85 |
| drawn | M.E. | checked | |
| project no. | 106 | sheet no. | SP 1 |

This drawing, as an instrument of service, is the property of the architect and may not be reproduced without their permission and unless the reproduction carries their name. All designs and other information shown on this drawing are for use on the specified project only and shall not be used otherwise without written permission of the architect.

Written dimensions shall have precedence over scaled dimensions. Contractors shall verify and be responsible for all dimensions and conditions on the job and the architect shall be informed of any variations from the dimensions and conditions shown on the drawing. Shop drawings shall be submitted to the architect for approval before proceeding with fabrication.

- *NOTE: FOR CONTINUATION OF WALKS SEE LANDSCAPE DRAWINGS // GULLY WALKS @ MOTOR COURT SHOWN ON THIS DWG. // FOR SCHEDULING OF WALKS, SEE LANDSCAPE DWGS.
- *NOTE: FOR GRADING, UTILITY INFO., ROAD INFO., SEE CIVIL DWGS.
- *NOTE: FOR LANDSCAPING, AND IRRIGATION, SEE LANDSCAPE DWGS.
- *NOTE: FOR SITE ELEC. WORK, SEE ELEC. DWGS.
- *NOTE: VERIFY EXACT LOCATION & WORDING OF "VERNAL HABITAT" SIGN AND "BEACH ACCESS" SIGN.
- *NOTE: VERIFY EXACT DESIGN OF ENTRANCE "S" SIGN.