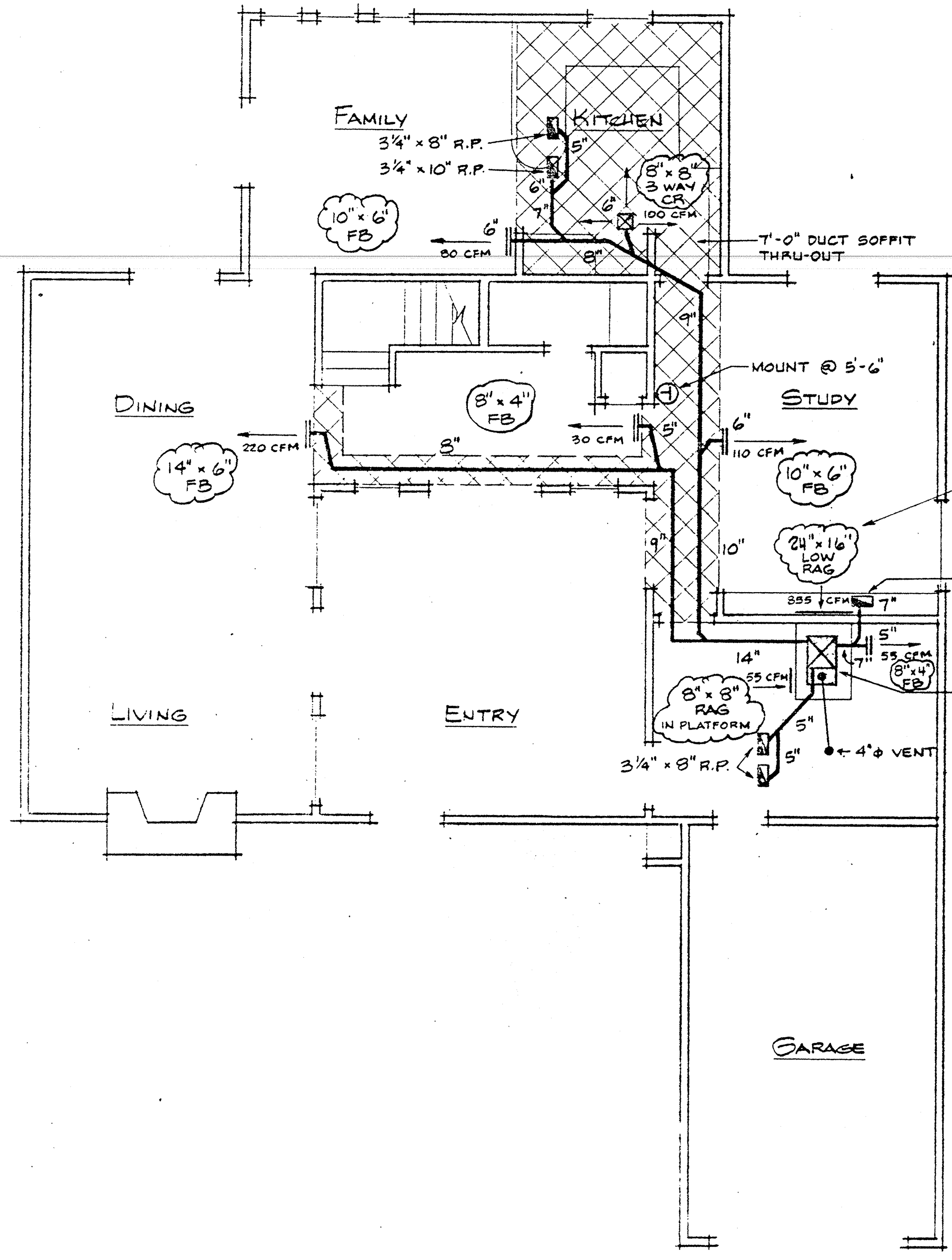
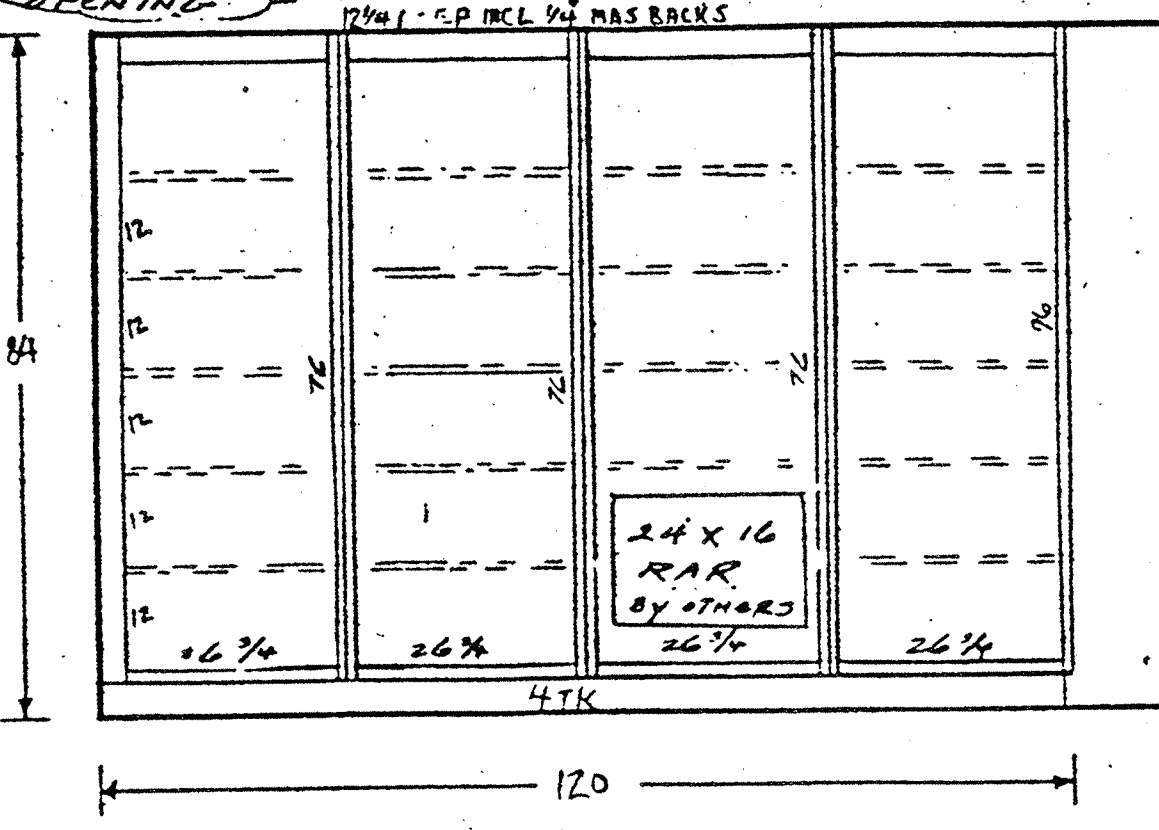


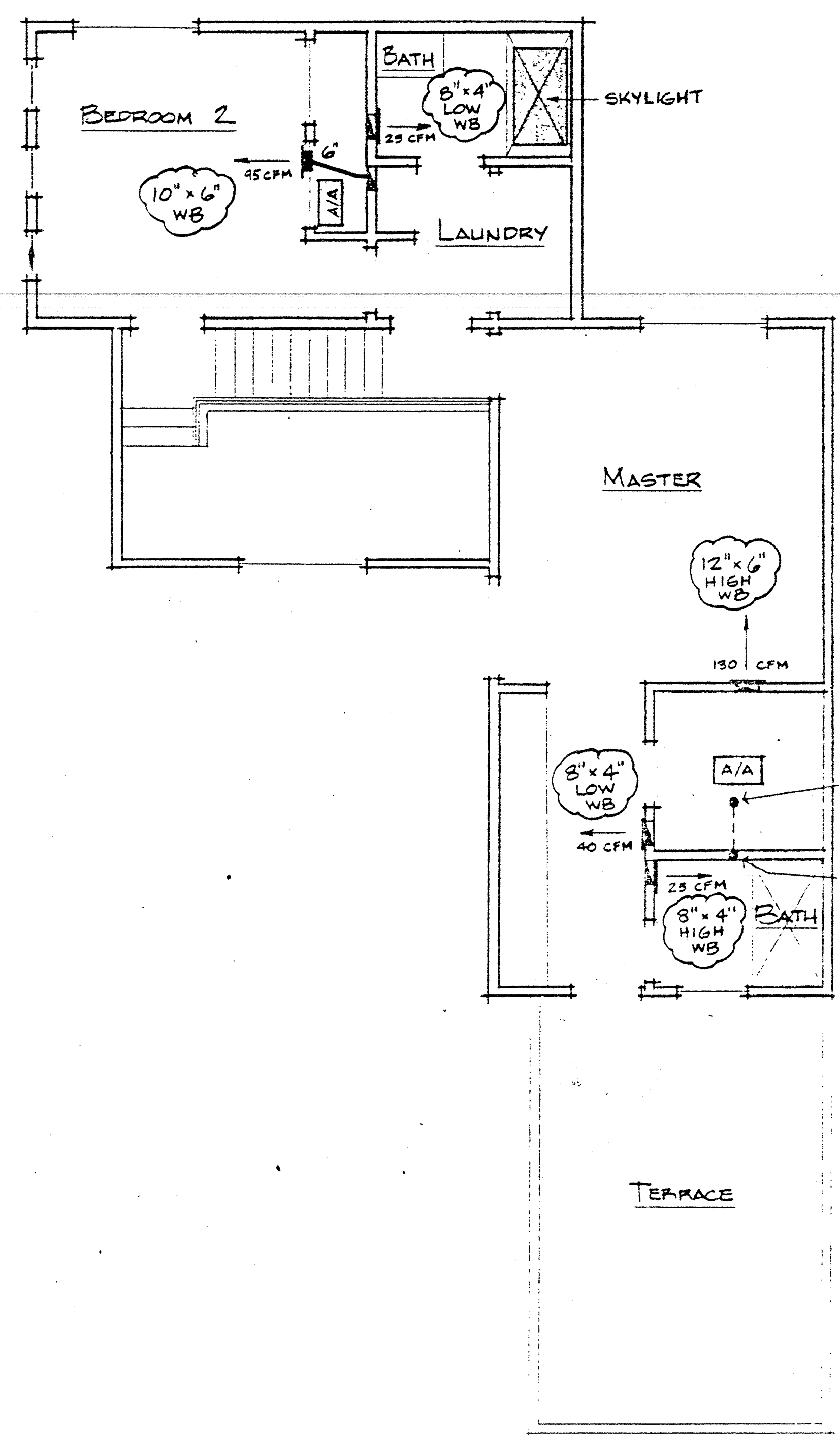
GOLDRICH & KEST
 U.C.S.B. FACULTY HOUSING
 SANTA BARBARA

OPTIONAL PAINT GRADE BOOK CASE
 5 FIXED INTERIOR
 SHELVES IN EACH
 OPENING



VERIFY LOCATION PER SHEET A-7 ELEVATION 1 OF ARCHITECTURAL PLANS CHANGED PER CAB. DETAIL

"PAYNE" # 395A036035 UPFLOW FURNACE
 35,000 BTU OUTPUT, 110 VOLT, 1/3 HP MOTOR
 1200 CFM MAXIMUM @ HIGH SPEED & 5 S.P.
 4" VENT



FIRST FLOOR

SECOND FLOOR

UNIT 1

AS BUILT
 2/13/87
 LHM

REVISIONS	BY

IrvineWest
 HEATING & AIR CONDITIONING, INC.
 1130 E. PACIFIC AVENUE
 ANAHEIM, CALIF. 92805
 (714) 634-2716

MECHANICAL LAYOUTS

GOLDRICH & KEST
 UCSB FACULTY HOUSING
 SANTA BARBARA, CA

DATE	10-10-85
SCALE	1/4" = 1'-0"
DRAWN	S. CARLSON
SHEET	1 of 2
NO.	845