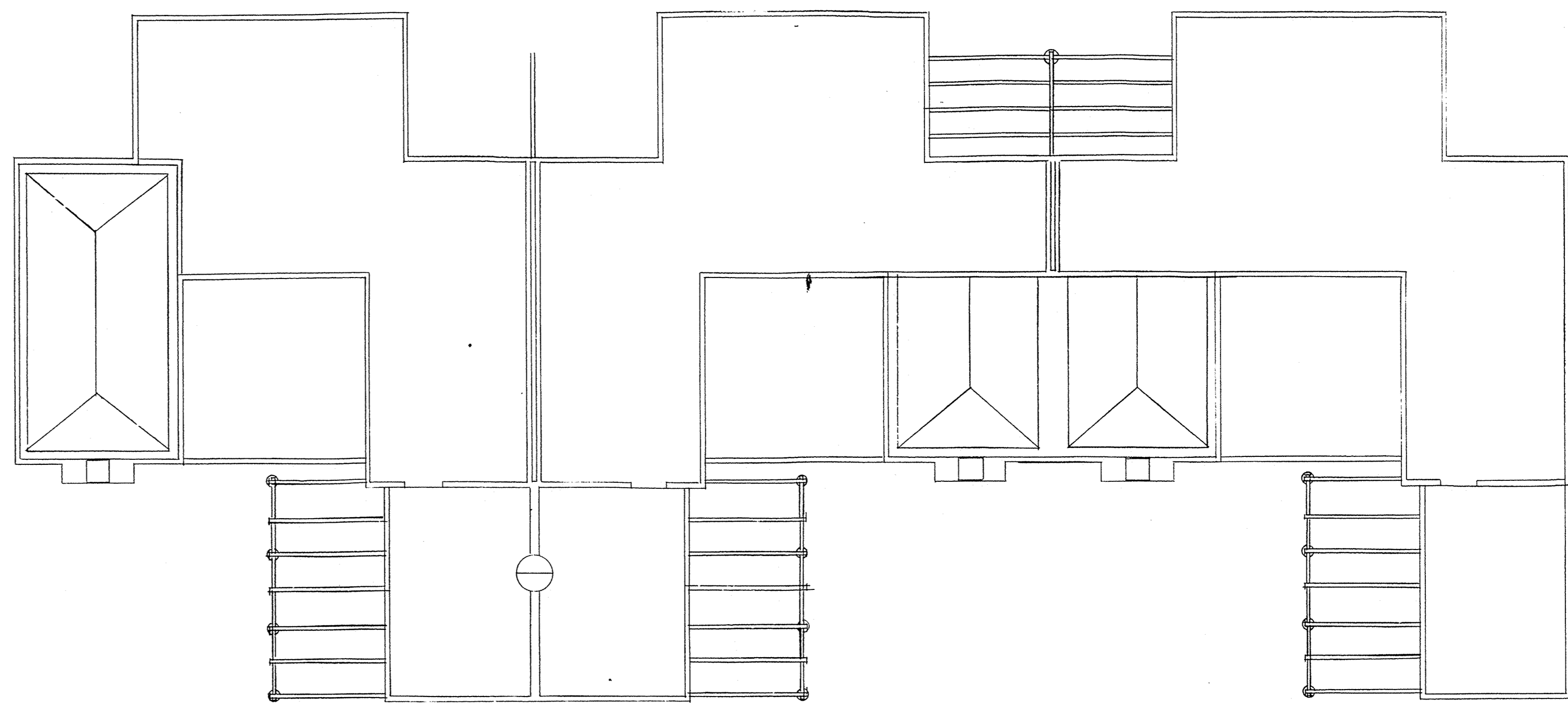
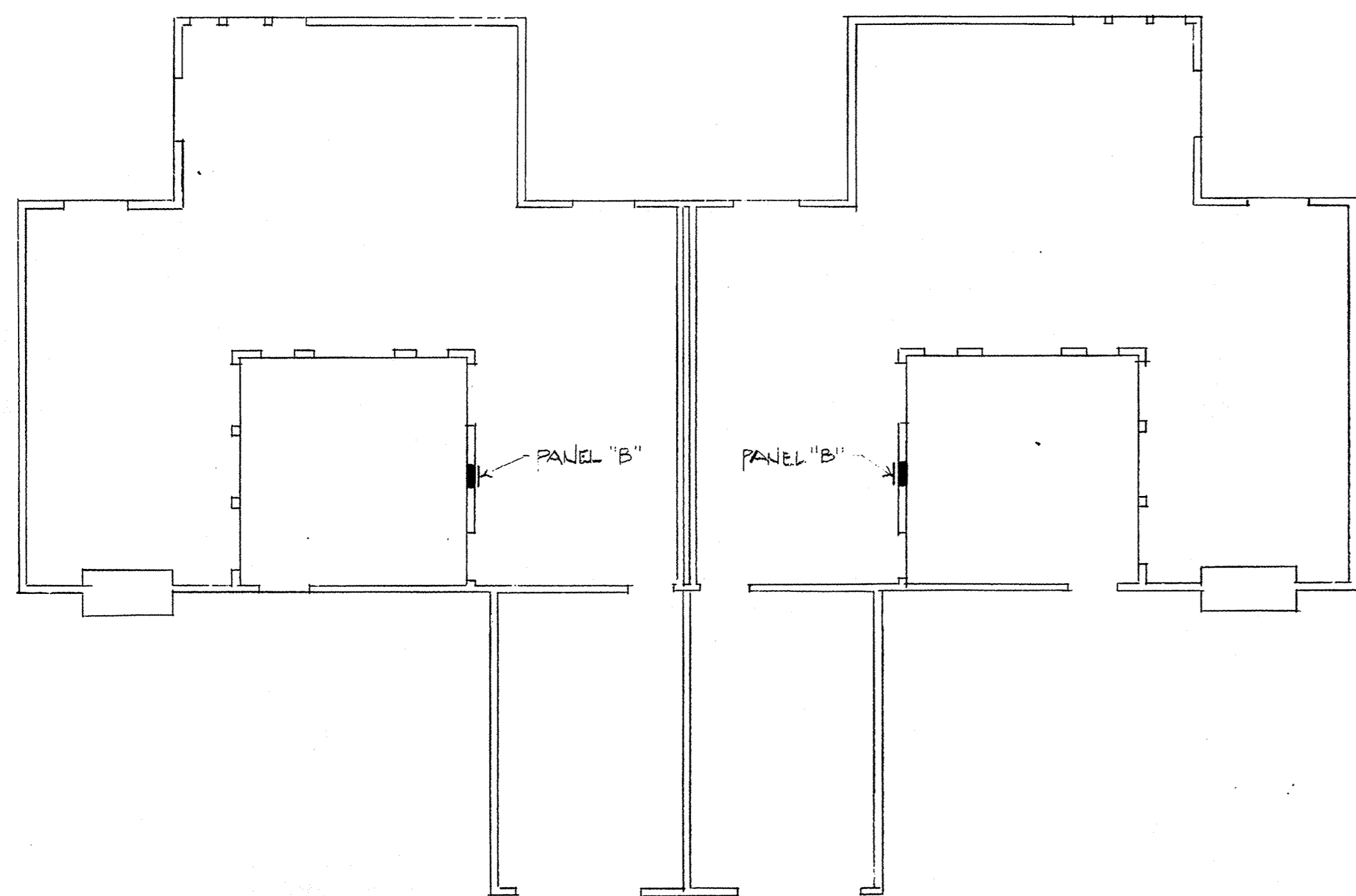


BLDG. "D" SECOND FLOOR ELECTRICAL PLAN
SCALE: 1/8" = 1'-0"



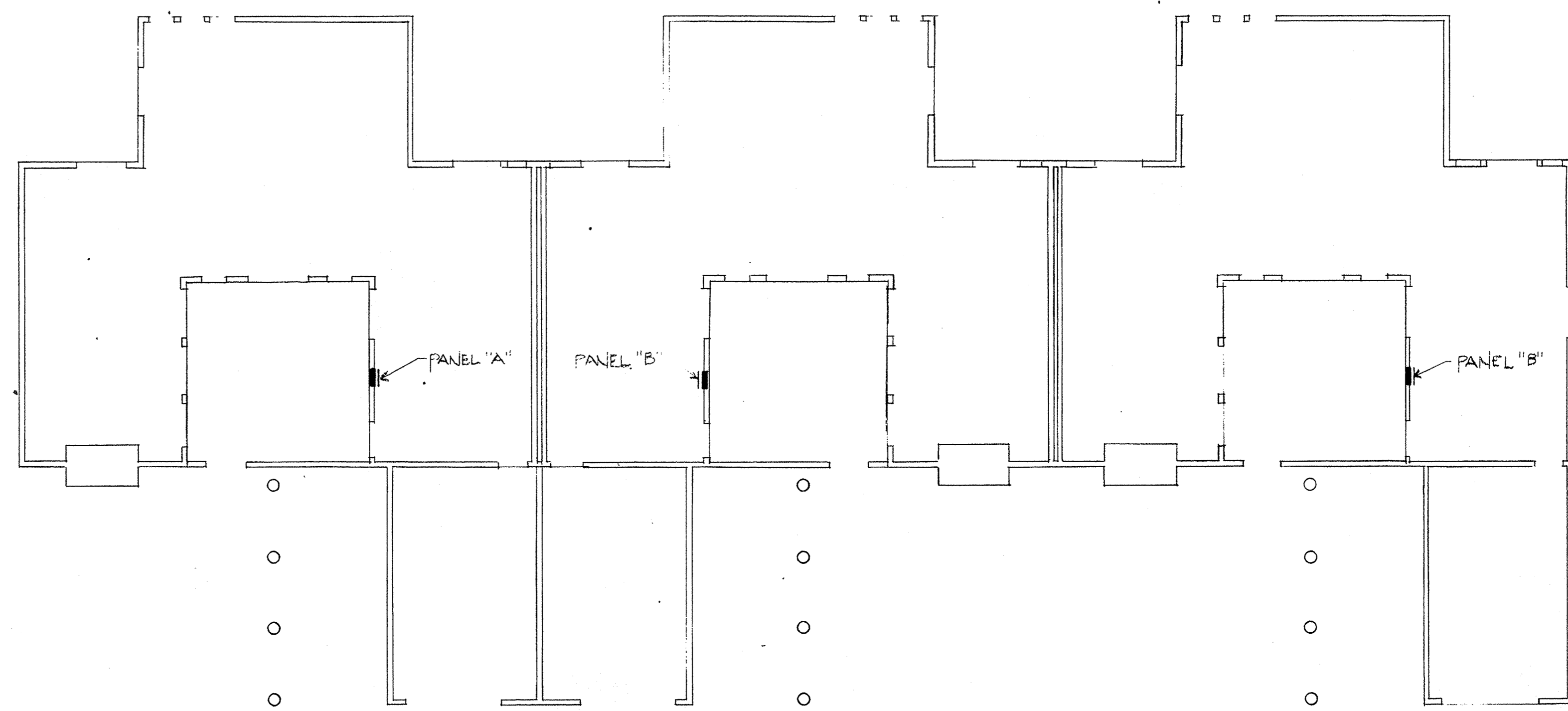
BLDG. "E" SECOND FLOOR ELECTRICAL PLAN
SCALE: 1/8" = 1'-0"



BLDG. "D" FIRST FLOOR ELECTRICAL PLAN
SCALE: 1/8" = 1'-0"

BUILDING TYPE "D" LOAD CALCULATION RURA #1015D
4296 SQUARE FEET APPL. LOAD # 007

- I) GENERAL LIGHTING LOAD:
4296 SQ. FT. X 3 W./SQ. FT. = 12.8 KW.
(4) SMALL APP. CIR. (81.5 KW EA.) = 5.0
(2) LAUNDRY CIR. (81.5 KW EA.) = 3.0
GENERAL LIGHTING SUBTOTAL = 21.8
 - DEMAND PER NEC TABLE #220-11:
FIRST 3.0 KW @ 100% = 3.0 KW
REMAINDER @ 35% = 6.5
GENERAL LIGHTING TOTAL = 9.5 KW.
 - II) FIXED APPLIANCE LOAD:
(2) FAU'S (@ 0.6 KW. EA.) = 1.2 KW.
(2) DISPOSALS (@ 0.8 KW. EA.) = 1.6
(2) DISHWASHERS (@ 1.2 KW. EA.) = 2.4
(2) MICROWAVE (@ 1.0 KW. EA.) = 2.0
(2) DOOR OPENER (@ 0.8 KW. EA.) = 1.6
FIXED APPLIANCE LOAD SUBTOTAL = 8.8 KW.
 - DEMAND PER NEC #220-17:
8.8 KW. @ 75% = 6.6 KW. = 6.6 KW.
 - III) OTHER LOADS:
(2) RANGES = 11.0 KW.
(2) DRYERS (5.0KW EA @ 100%) = 10.0
OTHER LOAD TOTAL = 21.0 KW.
 - BUILDING TOTAL LOAD = 37.1 KW.
- 37,100 W. / 240 VOLTS, 1 ♂ = 154.5 AMPERES



BLDG. "E" FIRST FLOOR ELECTRICAL PLAN
SCALE: 1/8" = 1'-0"

BUILDING TYPE "E" LOAD CALCULATION RURA #1015E
6444 SQUARE FEET APPL. LOAD # 007

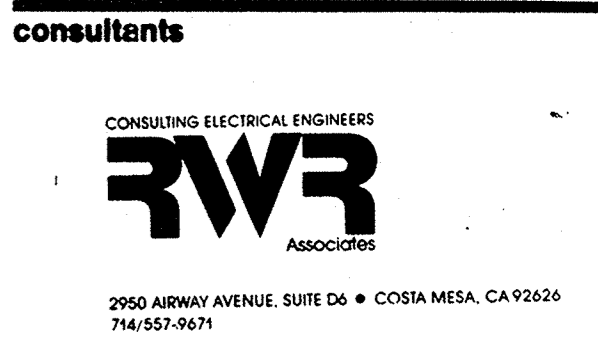
- I) GENERAL LIGHTING LOAD:
6444 SQ. FT. X 3 W./SQ. FT. = 19.3 KW.
(6) SMALL APP. CIR. (81.5 KW EA.) = 9.0
(3) LAUNDRY CIR. (81.5 KW EA.) = 4.5
GENERAL LIGHTING SUBTOTAL = 32.8
 - DEMAND PER NEC TABLE #220-11:
FIRST 3.0 KW @ 100% = 3.0 KW
REMAINDER @ 35% = 10.4
GENERAL LIGHTING TOTAL = 13.4 KW.
 - II) FIXED APPLIANCE LOAD:
(3) FAU'S (@ 0.6 KW. EA.) = 1.8 KW.
(3) DISPOSALS (@ 0.8 KW. EA.) = 2.4
(2) DISHWASHERS (@ 1.2 KW. EA.) = 2.4
(2) MICROWAVE (@ 1.0 KW. EA.) = 2.0
(3) DOOR OPENER (@ 0.8 KW. EA.) = 2.4
FIXED APPLIANCE LOAD SUBTOTAL = 13.2 KW.
 - DEMAND PER NEC #220-17:
13.2 KW. @ 75% = 9.9 KW. = 9.9 KW.
 - III) OTHER LOADS:
(3) RANGES = 14.0 KW.
(3) DRYERS (5.0KW EA @ 100%) = 15.0
OTHER LOAD TOTAL = 29.0 KW.
 - BUILDING TOTAL LOAD = 52.3 KW.
- 52,300 W. / 240 VOLTS, 1 ♂ = 217.9 AMPERES

AS BUILT
WALTON ELECTRIC CORP.
P.O. Box 1555
321 S. Vermont
Orem, UT 84057

no.	date	by



Architects and Planners L. Paul Zajfen
359 San Miguel Drive
Suite 200
Newport Beach, California
92660
(714) 644-4091



2900 ARMY AVENUE, SUITE 200 • COSTA MESA, CALIFORNIA 92626
714-557-9671

DATE: 05.10.10

project title
U · C · S · B

sheet title
**BLDG. D & E
ELECTRICAL
FLOOR PLANS**

scale	date
1/8" = 1'-0"	
drawn	checked
J. Z. DEBET	J. P. ...
project no.	sheet no.
	E-5
	of 10

This drawing, as an instrument of service, is the property of the architect and may not be reproduced without their permission and unless the reproduction carries their name. All designs and other information shown on this drawing are for use on the specified project only and shall not be used otherwise without written permission of the architect.

Written dimensions shall have precedence over scaled dimensions. Contractors shall verify and be responsible for all dimensions and conditions on the job, and the architect shall be informed of any variations from the dimensions and conditions shown on the drawing. Shop drawings shall be submitted to the architect for approval before proceeding with fabrication.