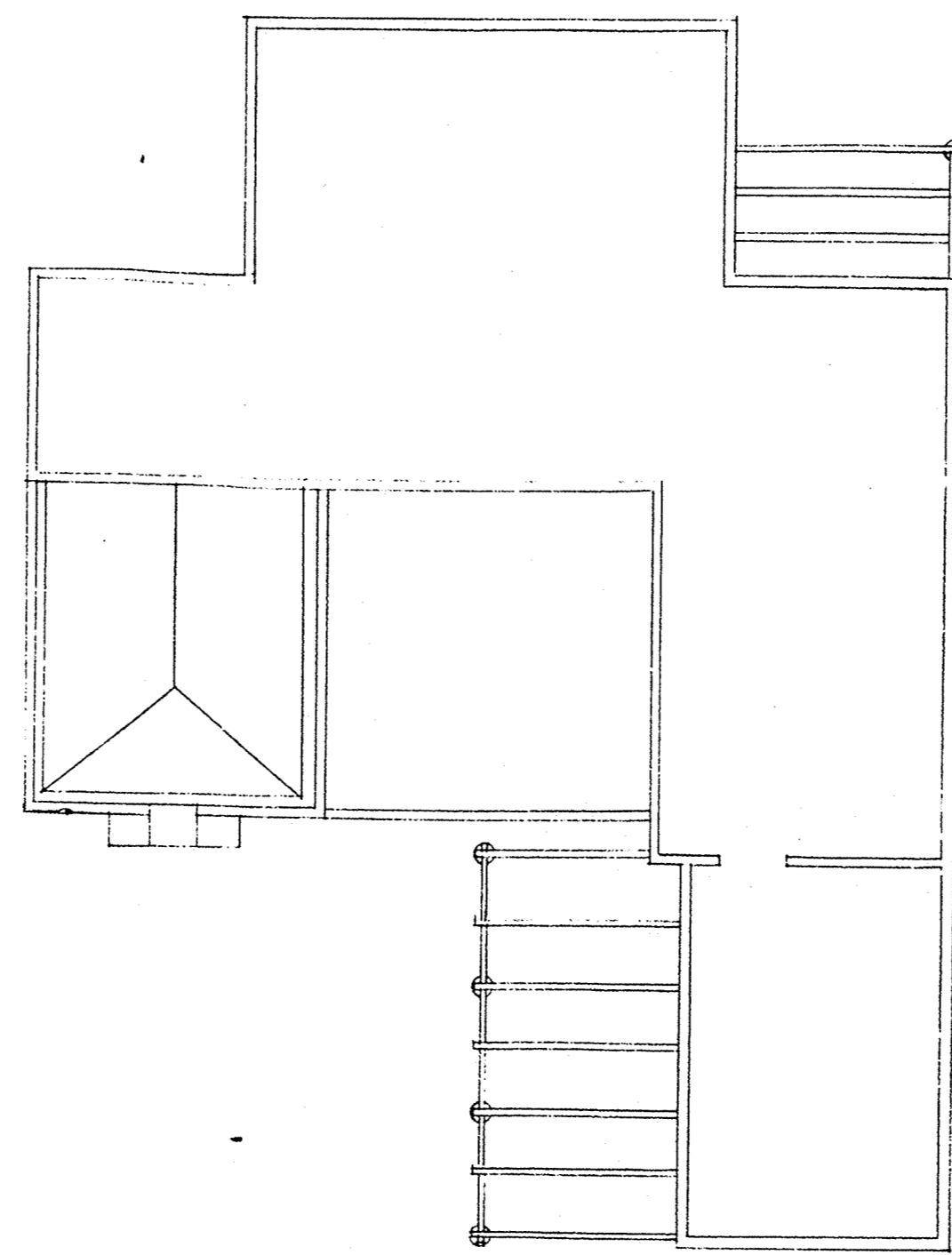
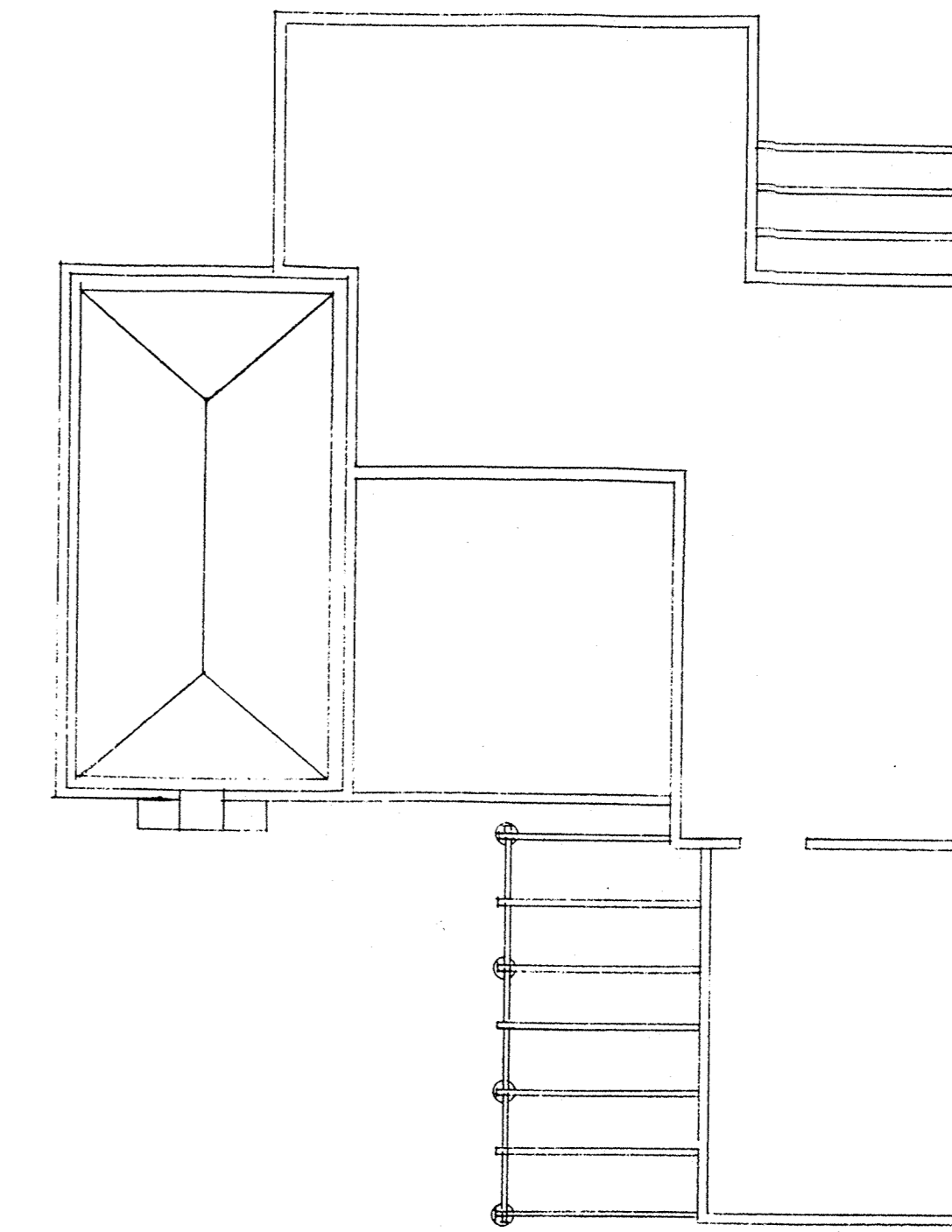


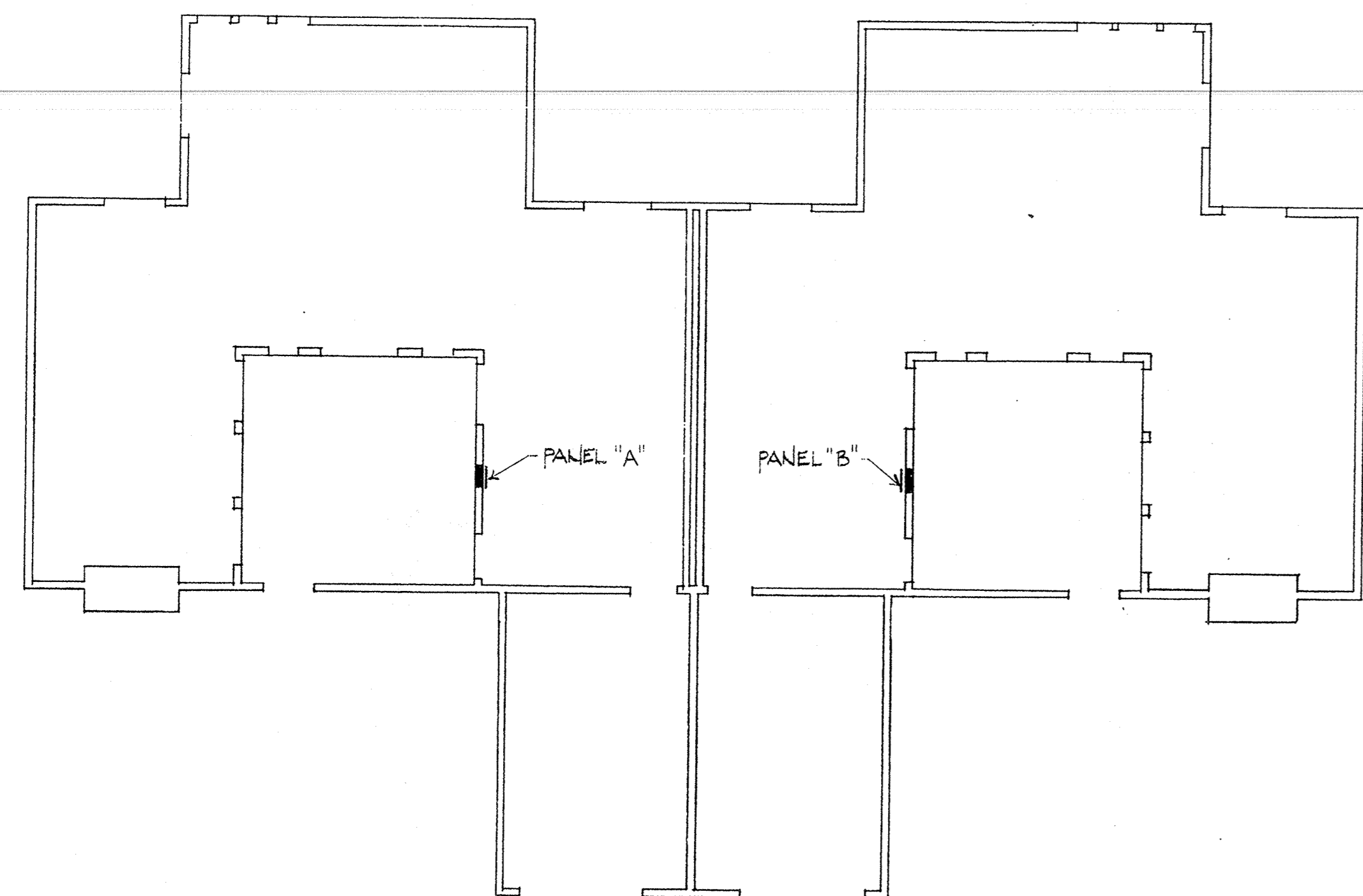
BLDG. "C" SECOND FLOOR ELECTRICAL PLAN  
SCALE: 1/8" = 1'-0"



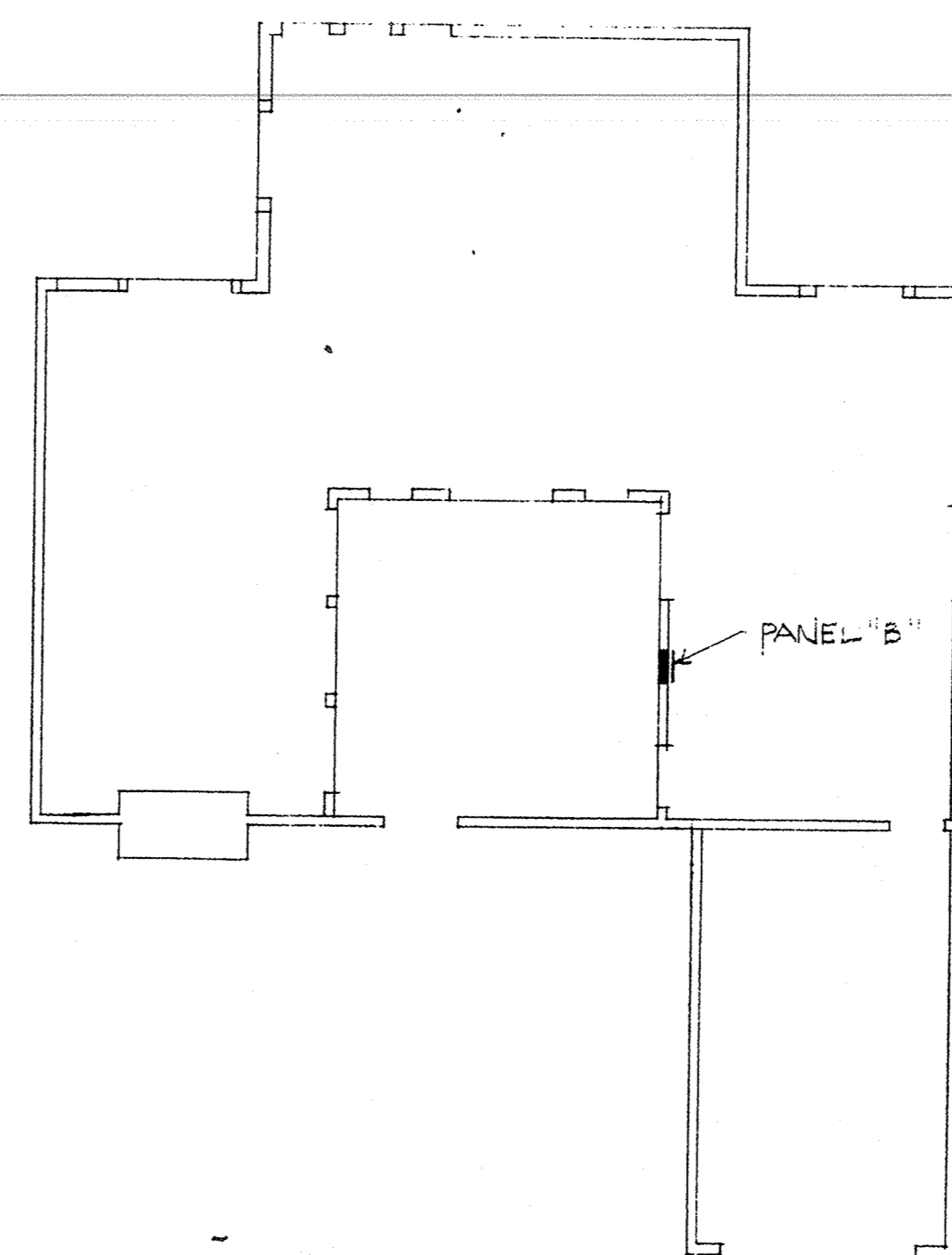
BLDG. "B" SECOND FLOOR ELECTRICAL PLAN  
SCALE: 1/8" = 1'-0"



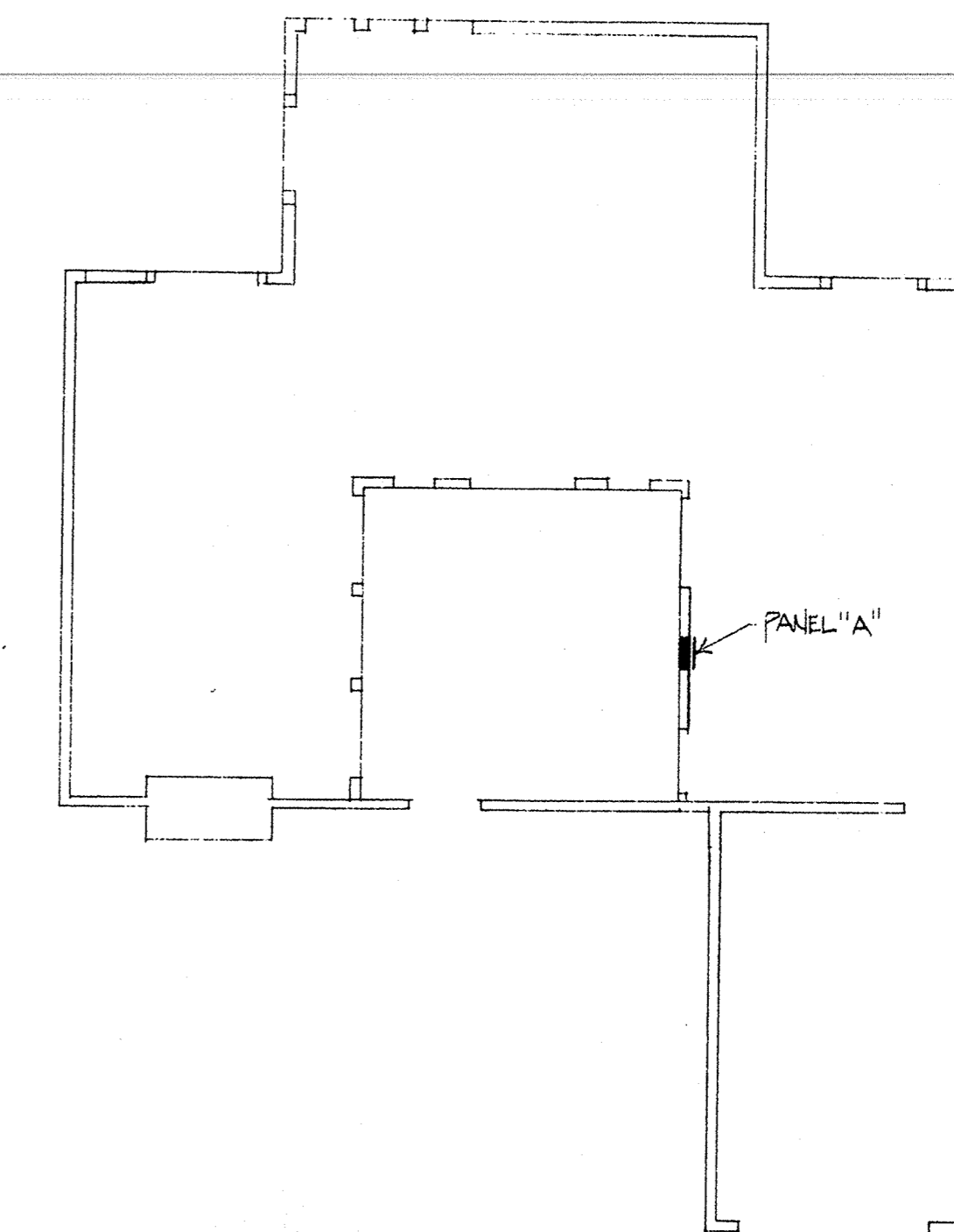
BLDG. "A" SECOND FLOOR ELECTRICAL PLAN  
SCALE: 1/8" = 1'-0"



BLDG. "C" FIRST FLOOR ELECTRICAL PLAN  
SCALE: 1/8" = 1'-0"



BLDG. "B" FIRST FLOOR ELECTRICAL PLAN  
SCALE: 1/8" = 1'-0"



BLDG. "A" FIRST FLOOR ELECTRICAL PLAN  
SCALE: 1/8" = 1'-0"

BUILDING TYPE "C" LOAD CALCULATION  
4296 SQUARE FEET

RWRA #1015C  
APPL. LOAD # 007

I) GENERAL LIGHTING LOAD:  
4296 SQ. FT. X 3 W./SQ. FT. = 12.8 KW.  
(4) SMALL APP. CIR. (0.15 KW EA.) = 6.0  
(2) LAUNDRY CIR. (0.15 KW EA.) = 3.0  
GENERAL LIGHTING SUBTOTAL = 21.8

DEMAND PER NEC TABLE #220-11:  
FIRST 3.0 KW @ 100% = 3.0 KW.  
REMAINDER @ 35% = 6.5  
GENERAL LIGHTING TOTAL = 9.5 KW. = 9.5 KW.

II) FIXED APPLIANCE LOAD:  
(2) FAU'S (0.6 KW. EA.) = 1.2 KW.  
(2) DISPOSALS (0.8 KW. EA.) = 1.6  
(2) DISHWASHERS (0.12 KW. EA.) = 2.4  
(1) MICROWAVE (0.10 KW. EA.) = 2.0  
(2) DOOR OPENER (0.8 KW. EA.) = 1.6  
FIXED APPLIANCE LOAD SUBTOTAL = 8.8 KW.

DEMAND PER NEC #220-17:  
8.8 KW. @ 75% = 6.6 KW. = 6.6 KW.

III) OTHER LOAD:  
(2) RANGES = 11.0 KW.  
(2) DRYERS (5.0 KW EA @ 100%) = 10.0  
OTHER LOAD TOTAL = 21.0 KW. = 21.0 KW.

BUILDING TOTAL LOAD = 37.1 KW.

37,100 W. / 240 VOLTS, 1 φ = 154.5 AMPERES

BUILDING TYPE "B" LOAD CALCULATION  
2148 SQUARE FEET

RWRA #1015B  
APPL. LOAD # 007

I) GENERAL LIGHTING LOAD:  
2148 SQ. FT. X 3 W./SQ. FT. = 6.4 KW.  
(2) SMALL APP. CIR. (0.15 KW EA.) = 3.0  
(1) LAUNDRY CIR. (0.15 KW EA.) = 1.5  
GENERAL LIGHTING SUBTOTAL = 10.9

DEMAND PER NEC TABLE #220-11:  
FIRST 3.0 KW @ 100% = 3.0 KW.  
REMAINDER @ 35% = 2.7  
GENERAL LIGHTING TOTAL = 5.7 KW. = 5.7 KW.

II) FIXED APPLIANCE LOAD:  
(1) FAU'S (0.6 KW. EA.) = 0.6 KW.  
(1) DISPOSALS (0.8 KW. EA.) = 0.8  
(1) DISHWASHERS (0.12 KW. EA.) = 1.2  
(1) MICROWAVE (0.10 KW. EA.) = 1.0  
(1) DOOR OPENER (0.8 KW. EA.) = 0.8  
FIXED APPLIANCE LOAD SUBTOTAL = 4.4 KW.

DEMAND PER NEC #220-17:  
4.4 KW. @ 75% = 3.3 KW. = 3.3 KW.

III) OTHER LOAD:  
(1) RANGES = 8.0 KW.  
(1) DRYERS (5.0 KW EA @ 100%) = 5.0  
OTHER LOAD TOTAL = 13.0 KW. = 13.0 KW.

BUILDING TOTAL LOAD = 22.0 KW.

22,000 W. / 240 VOLTS, 1 φ = 91.6 AMPERES

BUILDING TYPE "A" LOAD CALCULATION  
2148 SQUARE FEET

RWRA #1015A  
APPL. LOAD # 007

I) GENERAL LIGHTING LOAD:  
2148 SQ. FT. X 3 W./SQ. FT. = 6.4 KW.  
(2) SMALL APP. CIR. (0.15 KW EA.) = 3.0  
(1) LAUNDRY CIR. (0.15 KW EA.) = 1.5  
GENERAL LIGHTING SUBTOTAL = 10.9

DEMAND PER NEC TABLE #220-11:  
FIRST 3.0 KW @ 100% = 3.0 KW.  
REMAINDER @ 35% = 2.7  
GENERAL LIGHTING TOTAL = 5.7 KW. = 5.7 KW.

II) FIXED APPLIANCE LOAD:  
(1) FAU'S (0.6 KW. EA.) = 0.6 KW.  
(1) DISPOSALS (0.8 KW. EA.) = 0.8  
(1) DISHWASHERS (0.12 KW. EA.) = 1.2  
(1) MICROWAVE (0.10 KW. EA.) = 1.0  
(1) DOOR OPENER (0.8 KW. EA.) = 0.8  
FIXED APPLIANCE LOAD SUBTOTAL = 4.4 KW.

DEMAND PER NEC #220-17:  
4.4 KW. @ 75% = 3.3 KW. = 3.3 KW.

III) OTHER LOAD:  
(1) RANGES = 8.0 KW.  
(1) DRYERS (5.0 KW EA @ 100%) = 5.0  
OTHER LOAD TOTAL = 13.0 KW. = 13.0 KW.

BUILDING TOTAL LOAD = 22.0 KW.

22,000 W. / 240 VOLTS, 1 φ = 91.6 AMPERES

AS BUILT  
WALTON ELECTRIC CORP.  
10000 W. 15th St.  
San Diego, CA 92144

| no. | date | by |
|-----|------|----|
|     |      |    |

**IBI**  
Group  
Architects and Planners  
L. Paul Zajfen  
2865 E. Coast Highway  
Suite 303  
Corona Del Mar, Ca.  
92625  
(714) 675-2390

project title  
**U · C · S · B**

| sheet title                                  |                     |
|--|---------------------|
| BLDGS. A, B & C<br>ELECTRICAL<br>FLOOR PLANS |                     |
| scale 1/8" = 1'-0"                           | date                |
| drawn by P. J. B. / P. J. B.                 | checked by P. J. B. |
| project no.                                  | sheet no.<br>E-4    |

This drawing, as an instrument of service, is the property of the architect and may not be reproduced without their permission and unless the reproduction carries their name. All designs and other information shown on this drawing are for use on the specified project only and shall not be used elsewhere without written permission of the architect.

Written dimensions shall have precedence over scaled dimensions. Contractors shall verify and be responsible for all dimensions and conditions on the job and the architect shall be informed of any variations from the dimensions and conditions shown on the drawing. Shop drawings shall be submitted to the architect for approval before proceeding with fabrication.