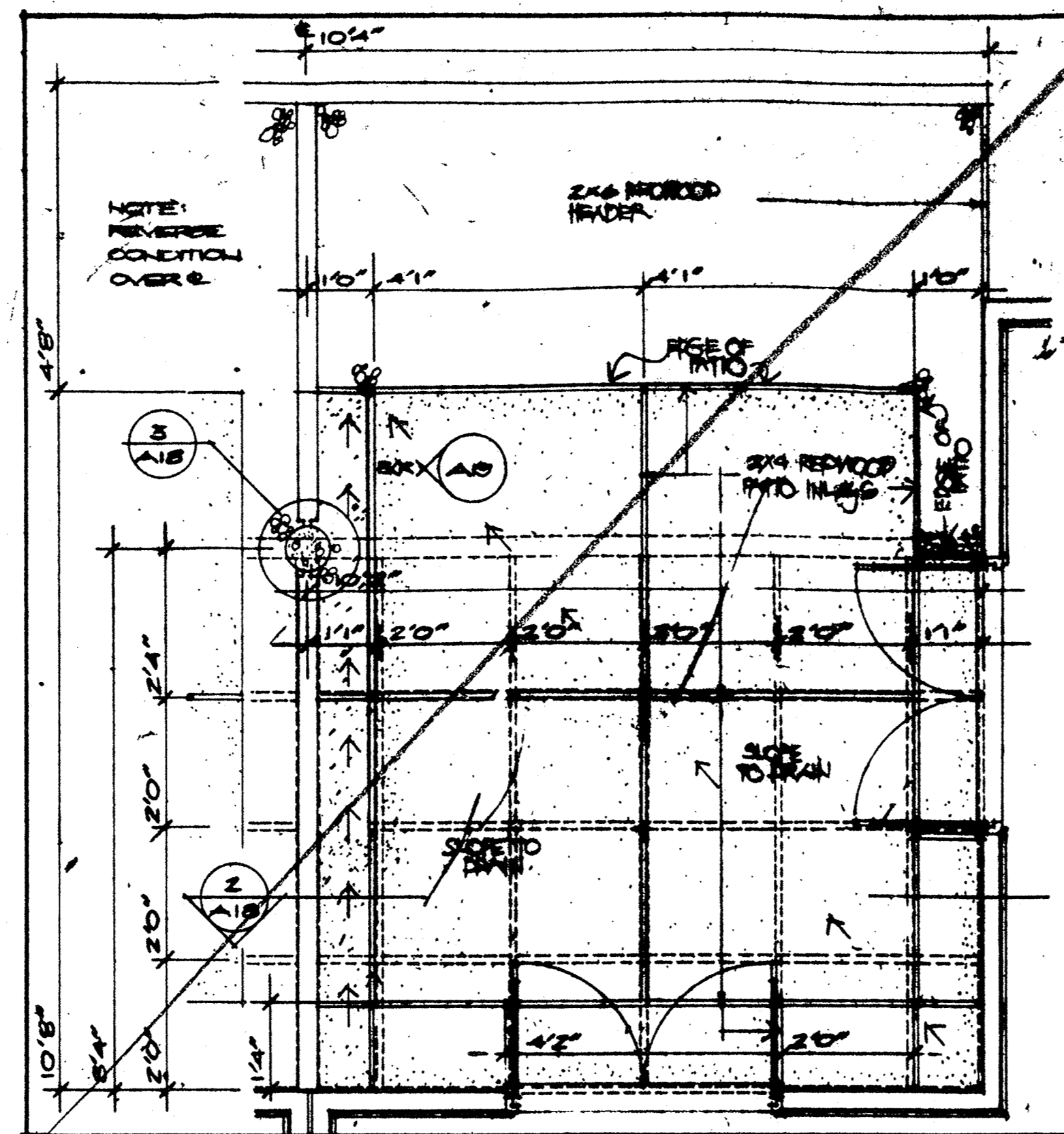
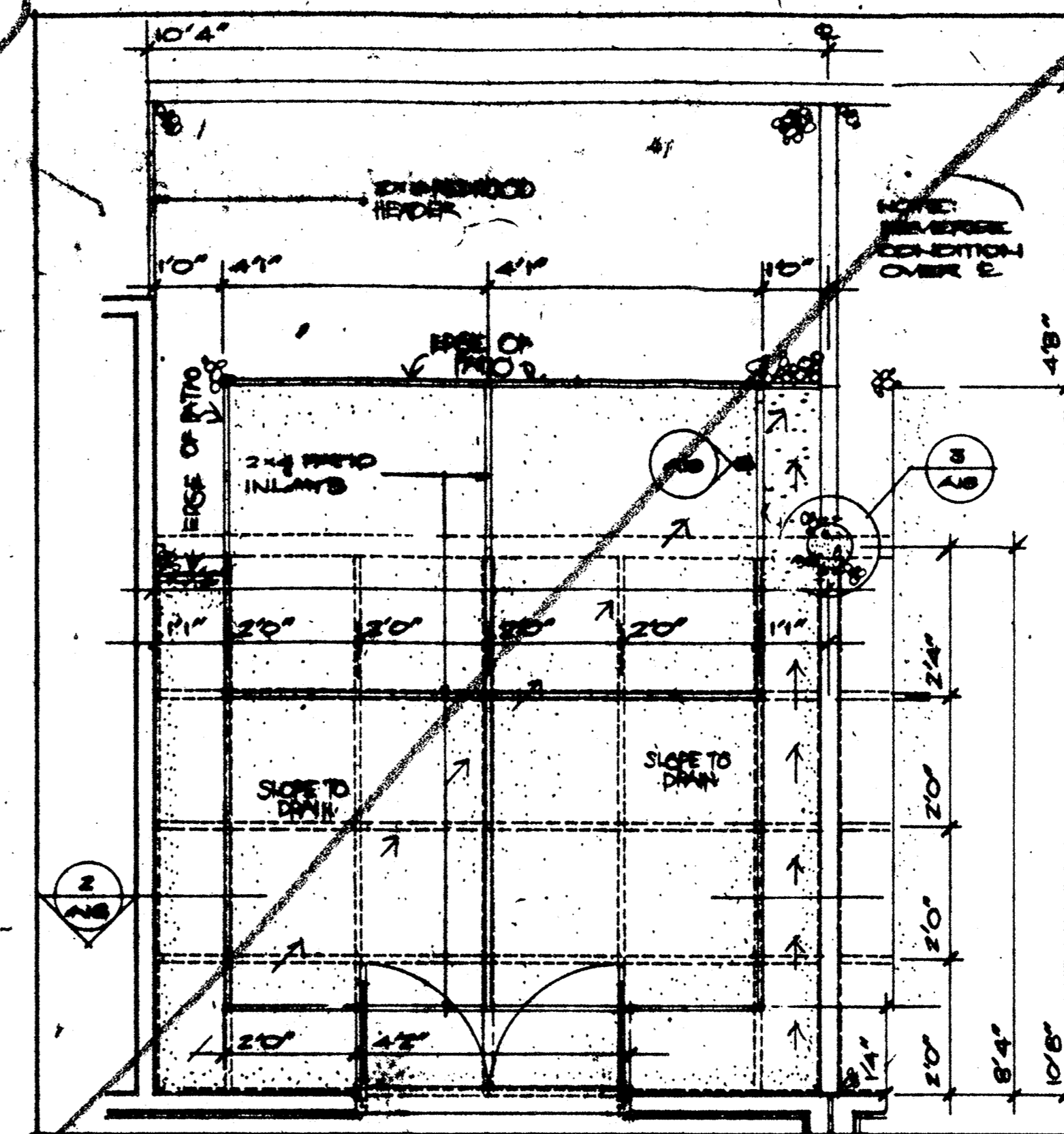


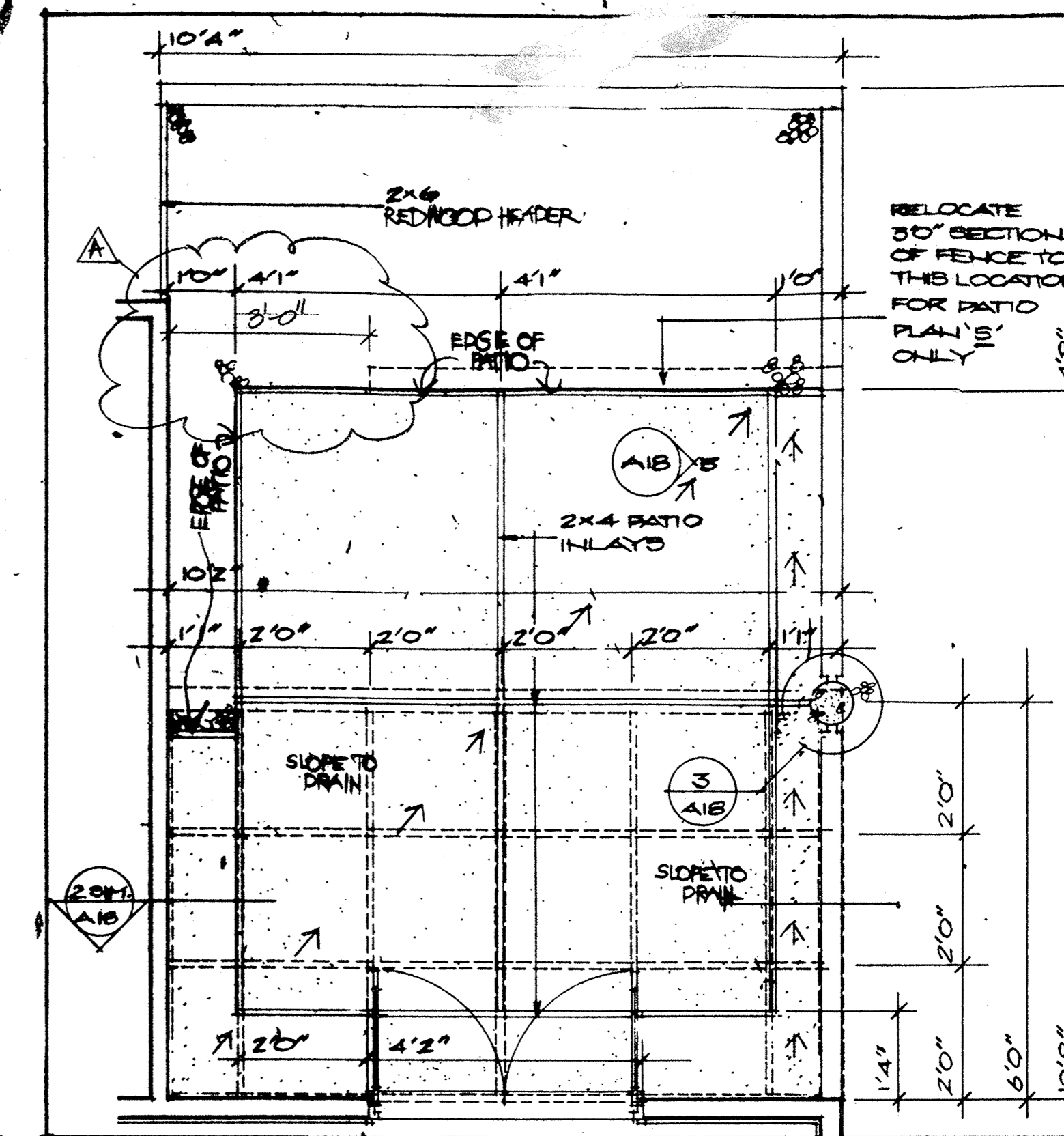
ELEVATION 1/2" = 1'-0"



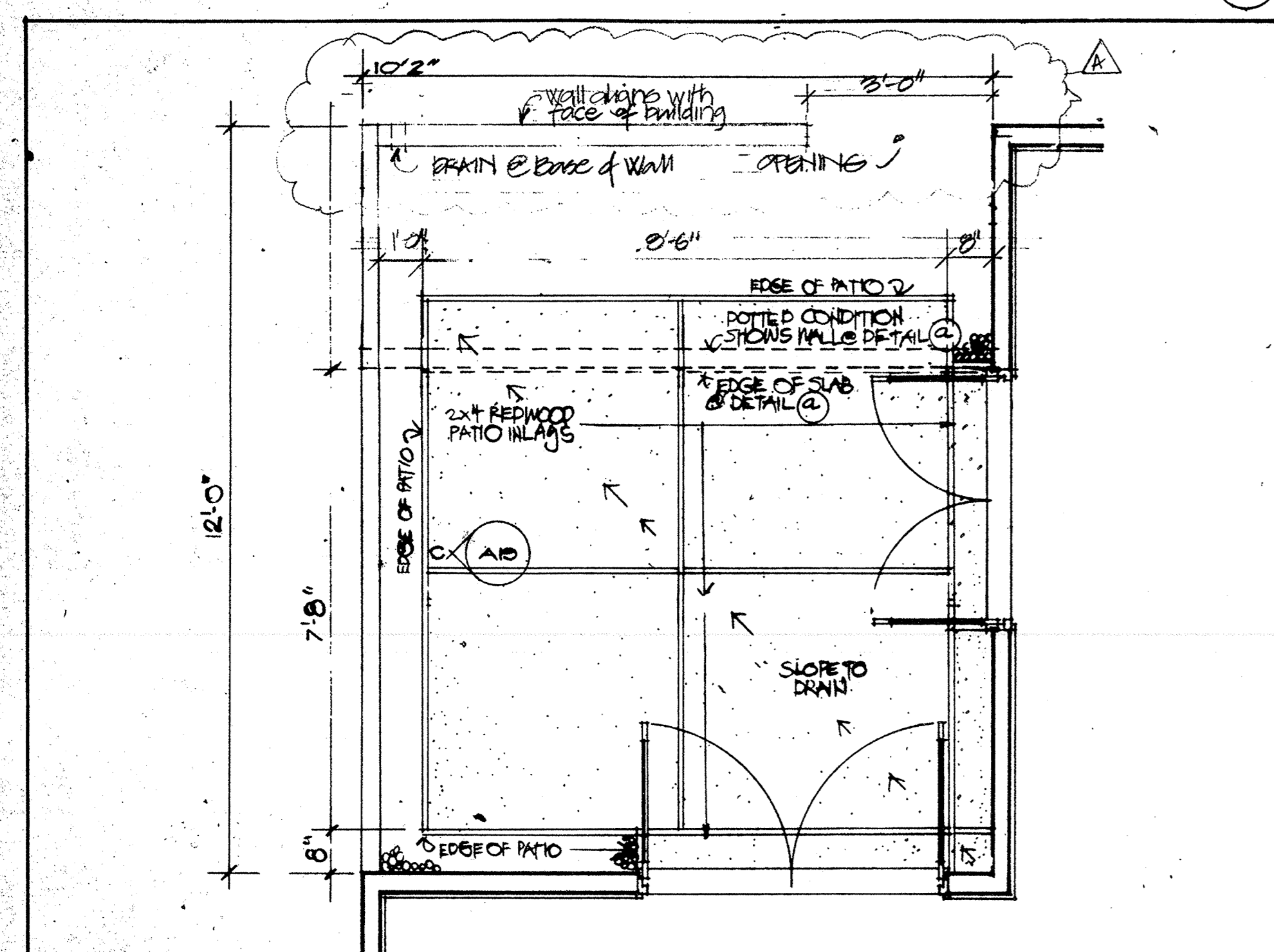
PATIO PLAN 1/2" = 1'-0"



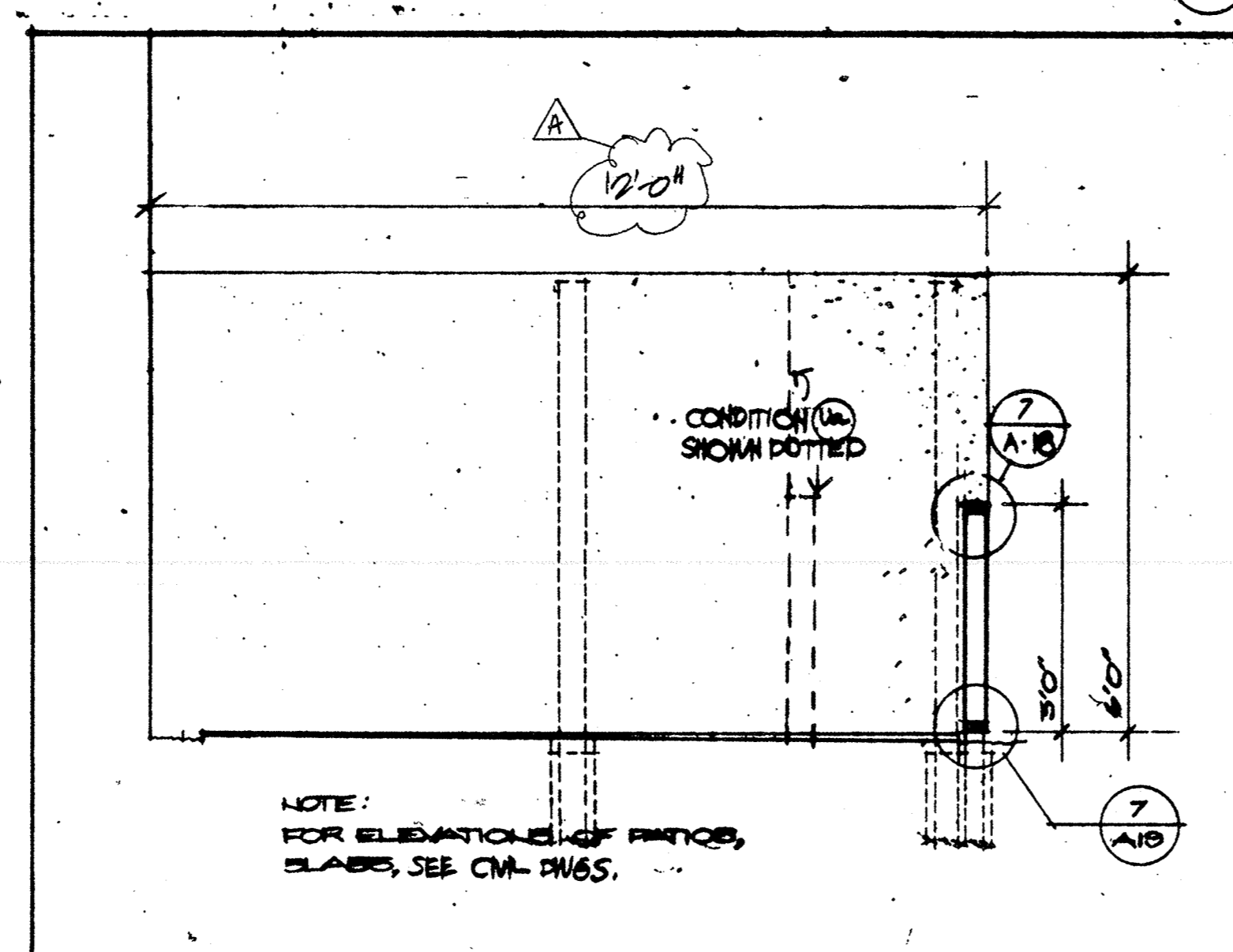
PATIO PLAN 1/2" = 1'-0"



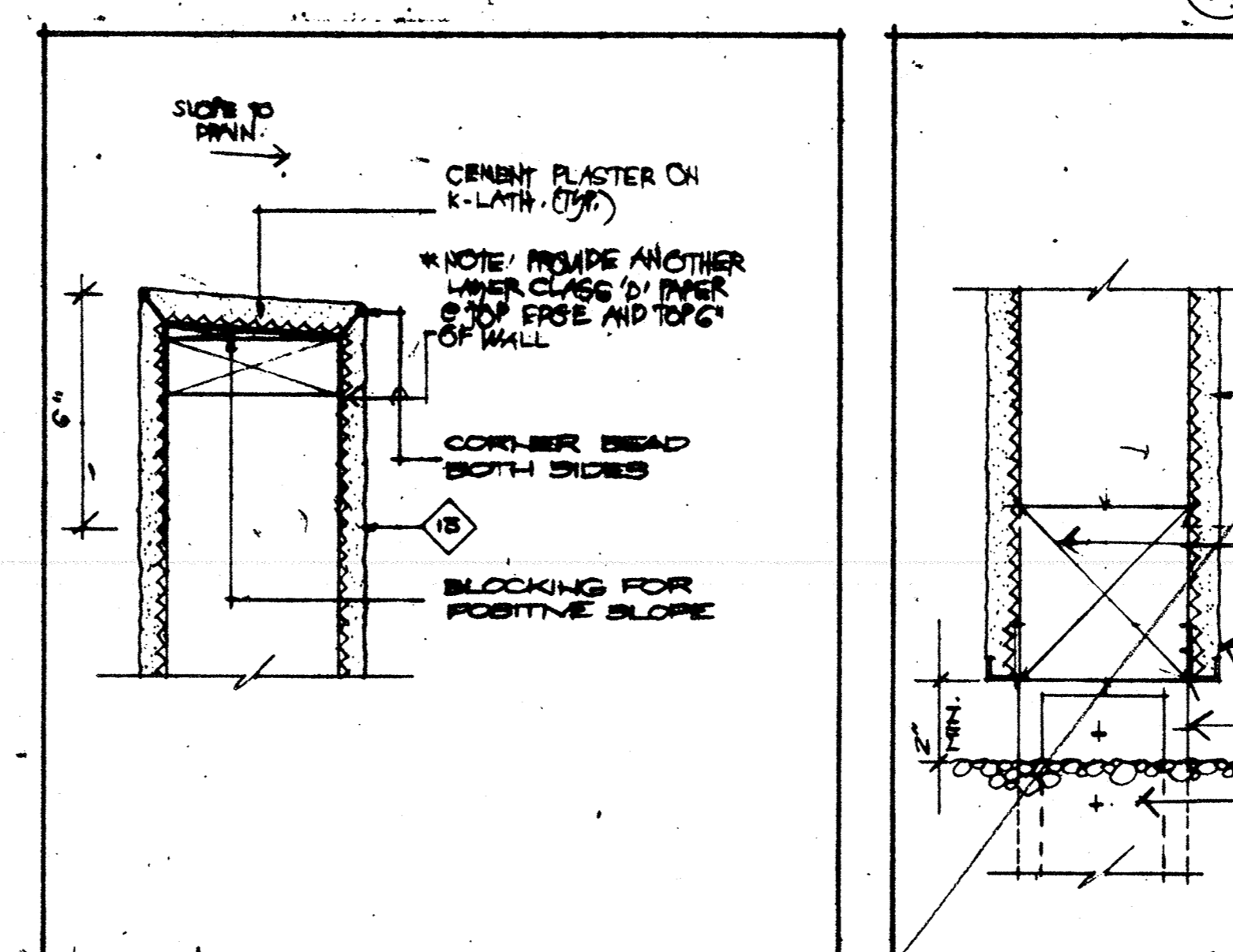
PATIO PLAN 1/2" = 1'-0"



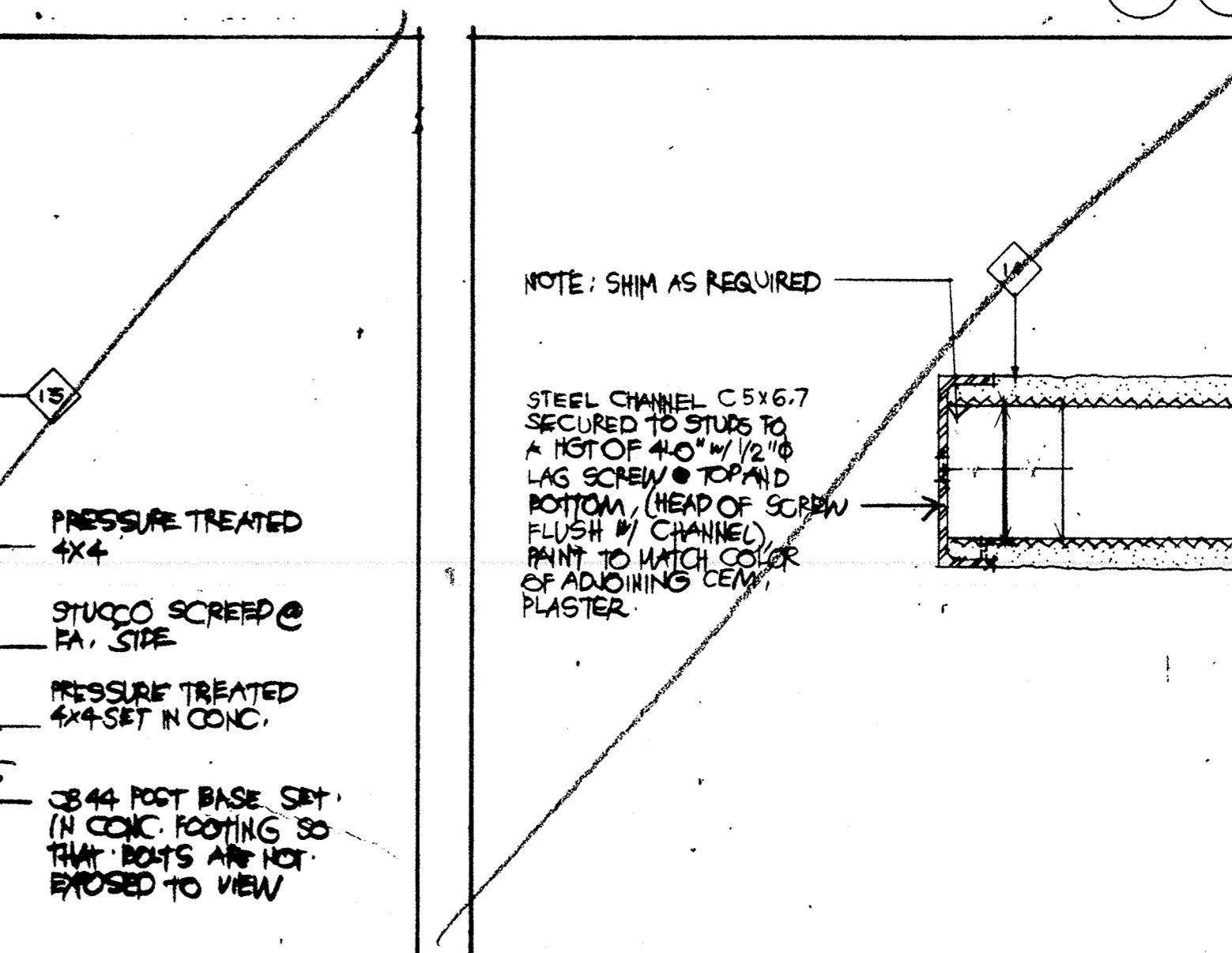
PATIO PLAN 1/2" = 1'-0"



ELEVATION 1/2" = 1'-0"

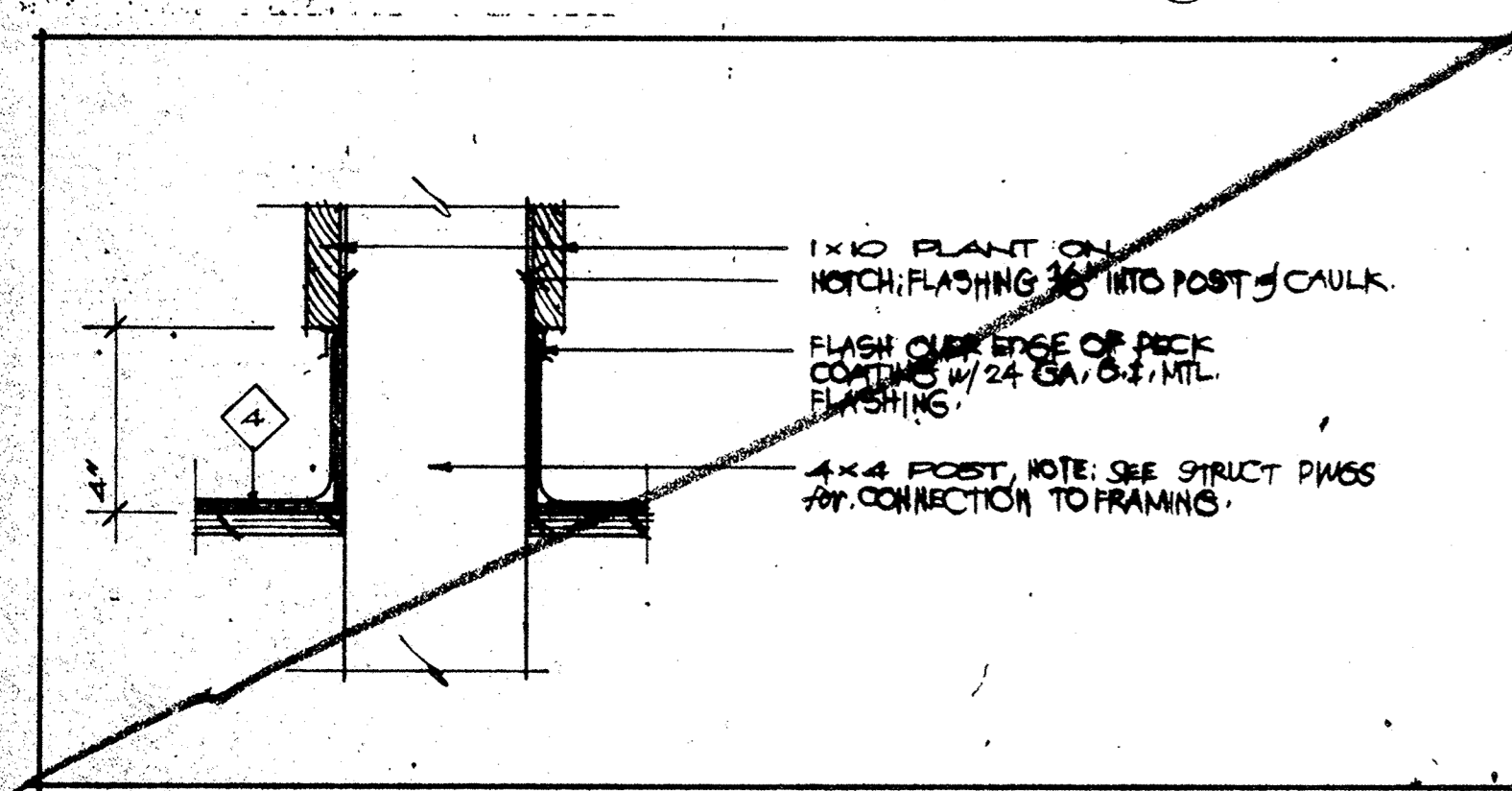


SECTION 3" = 1'-0"

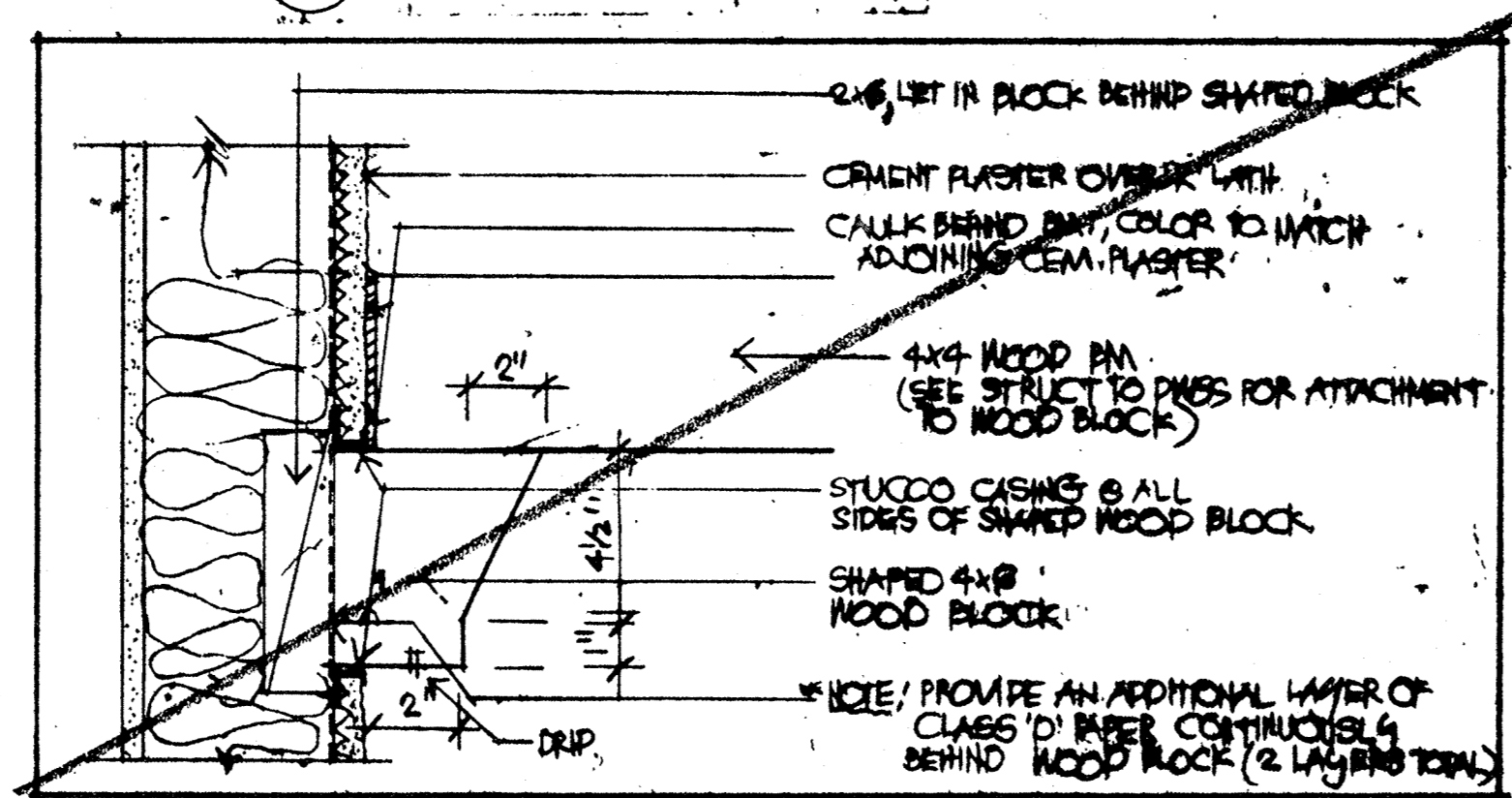


SECTION 3" = 1'-0"

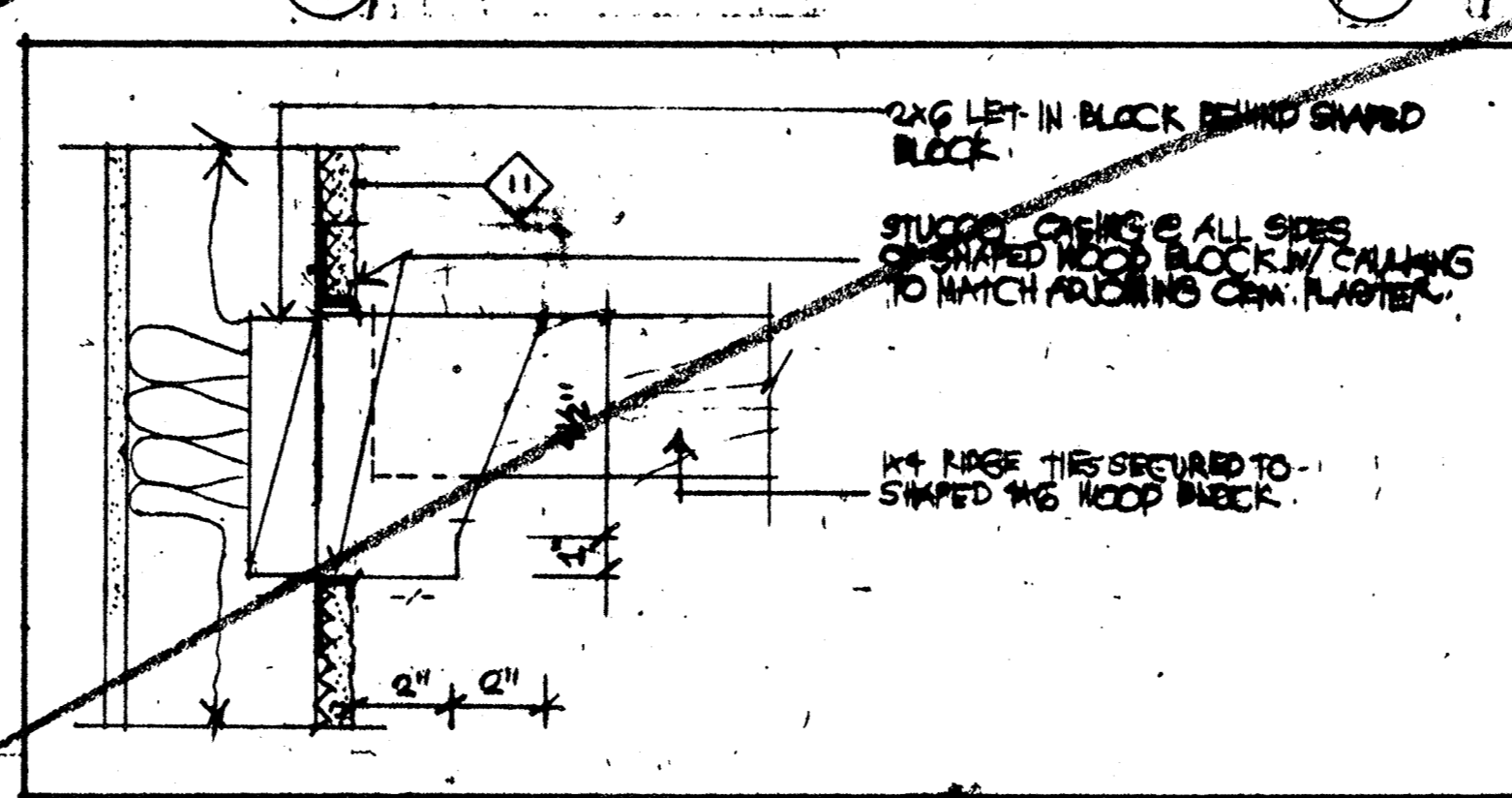
SECTION 3" = 1'-0"



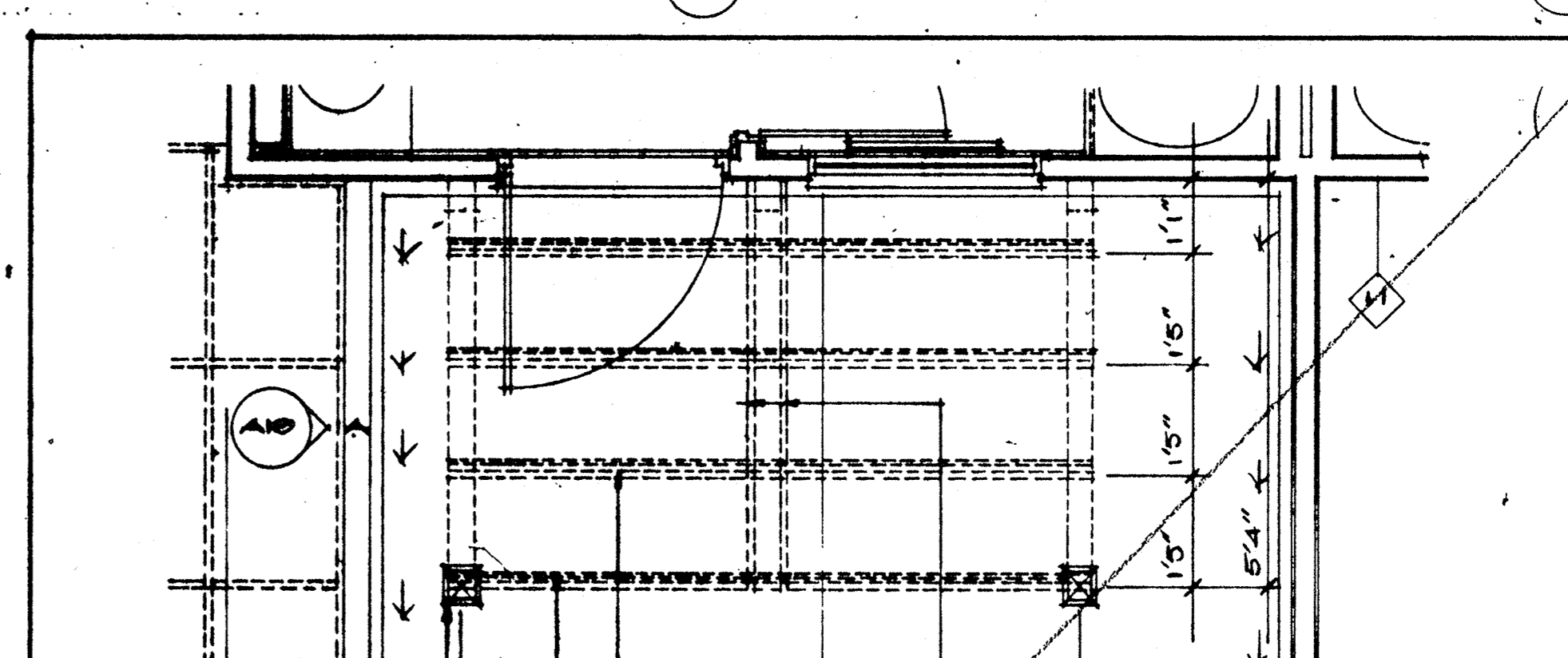
SECTION 3" = 1'-0"



SECTION 3" = 1'-0"

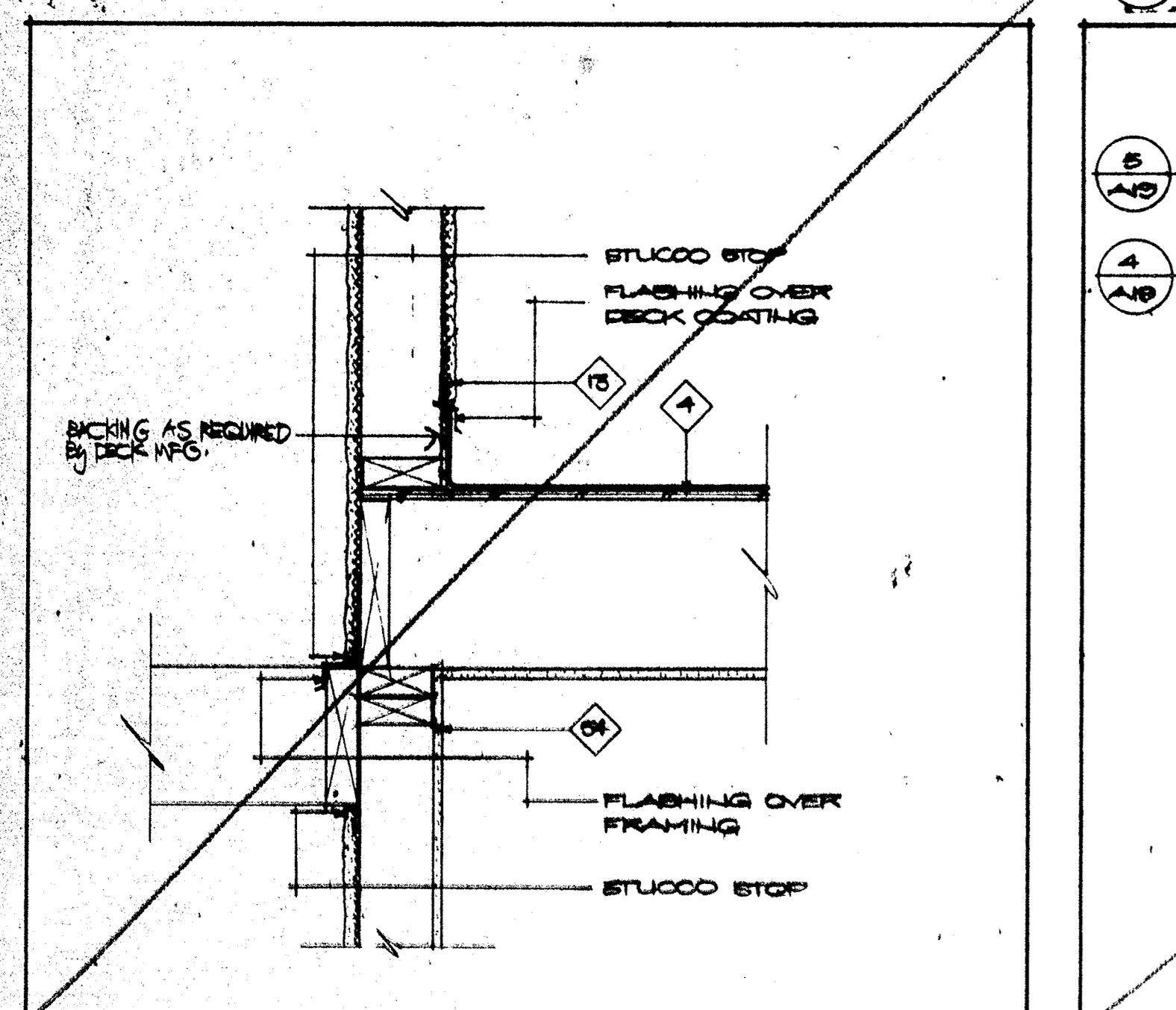


SECTION 3" = 1'-0"

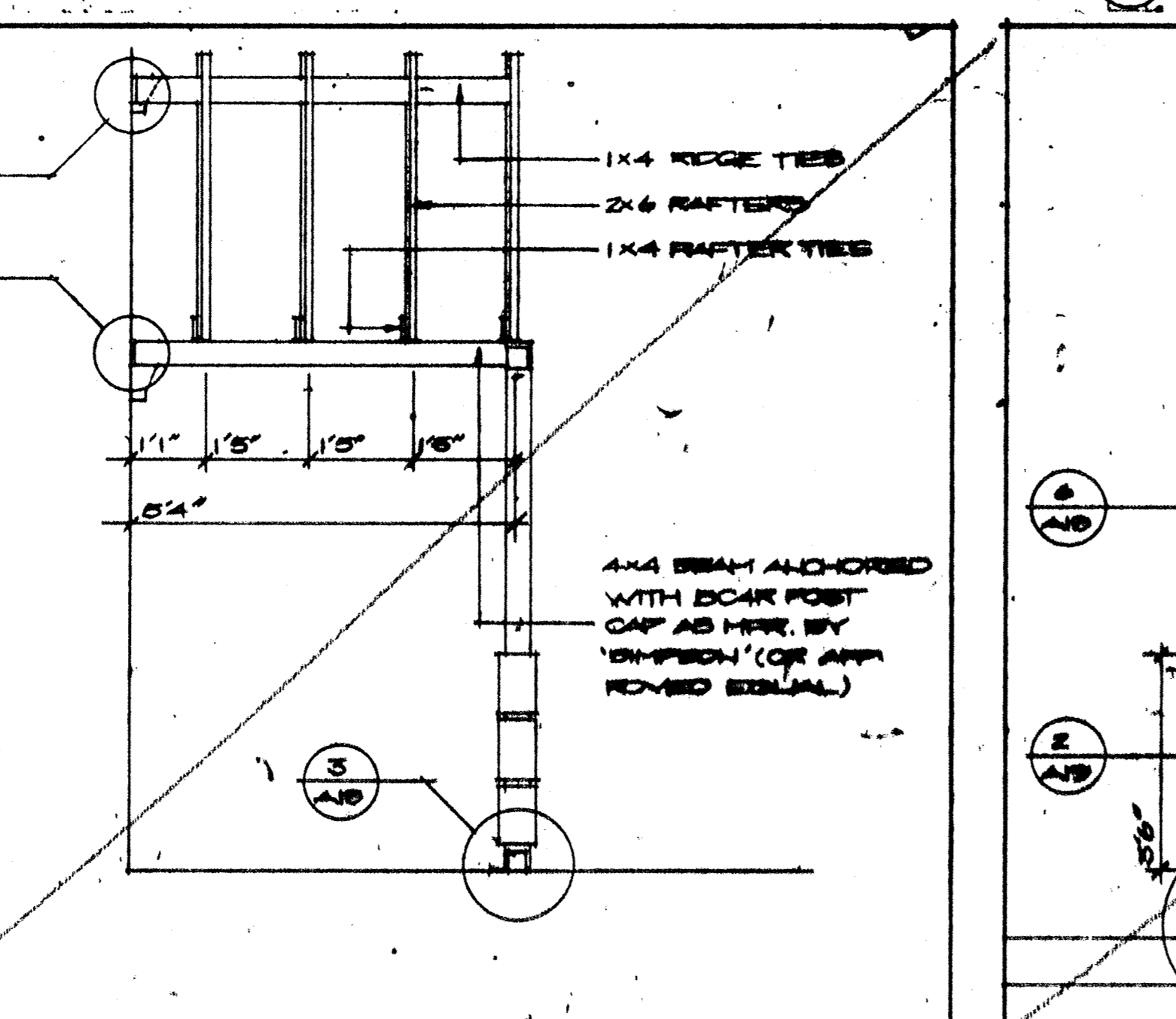


SECTION 3" = 1'-0"

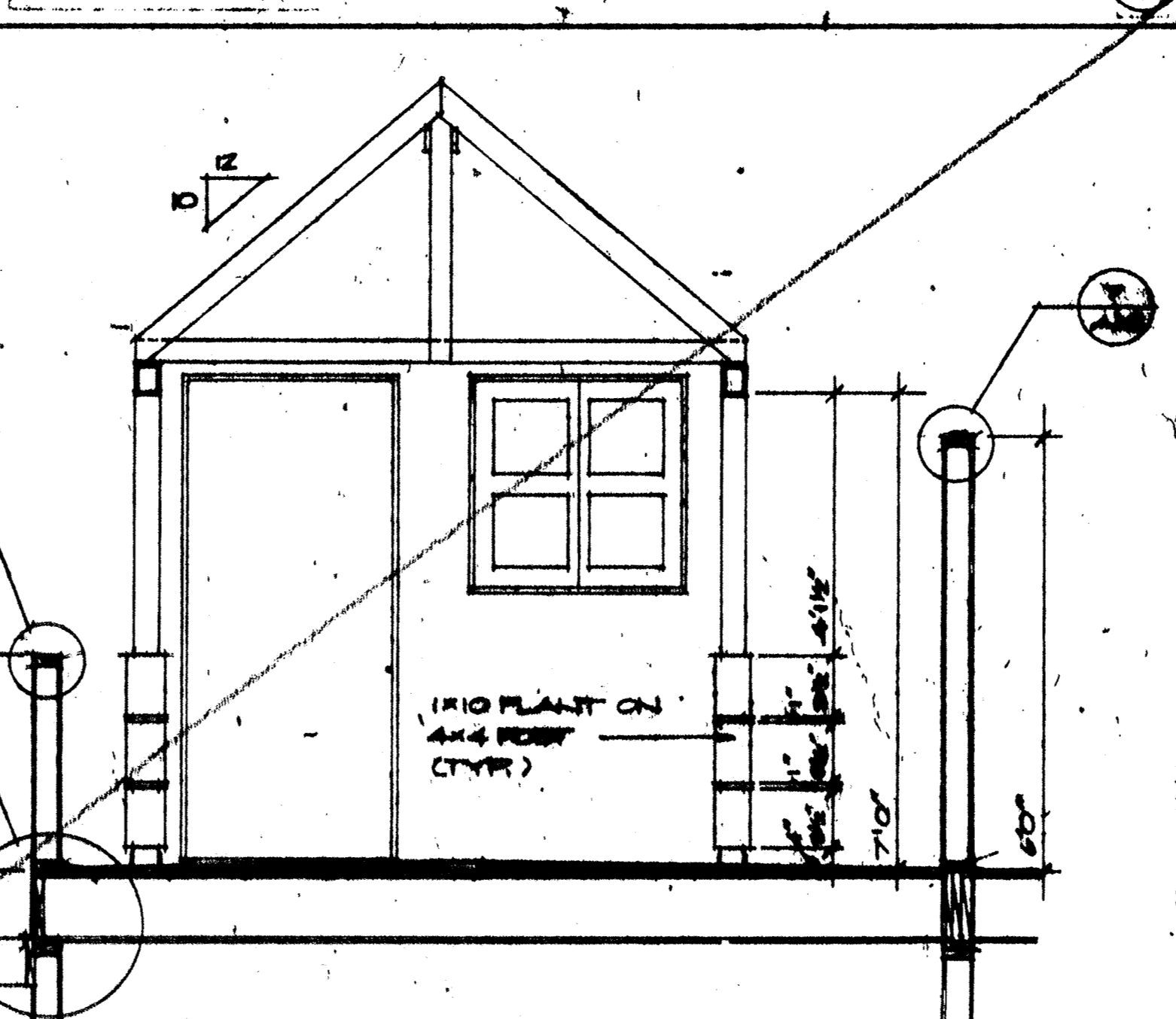
SECTION 3" = 1'-0"



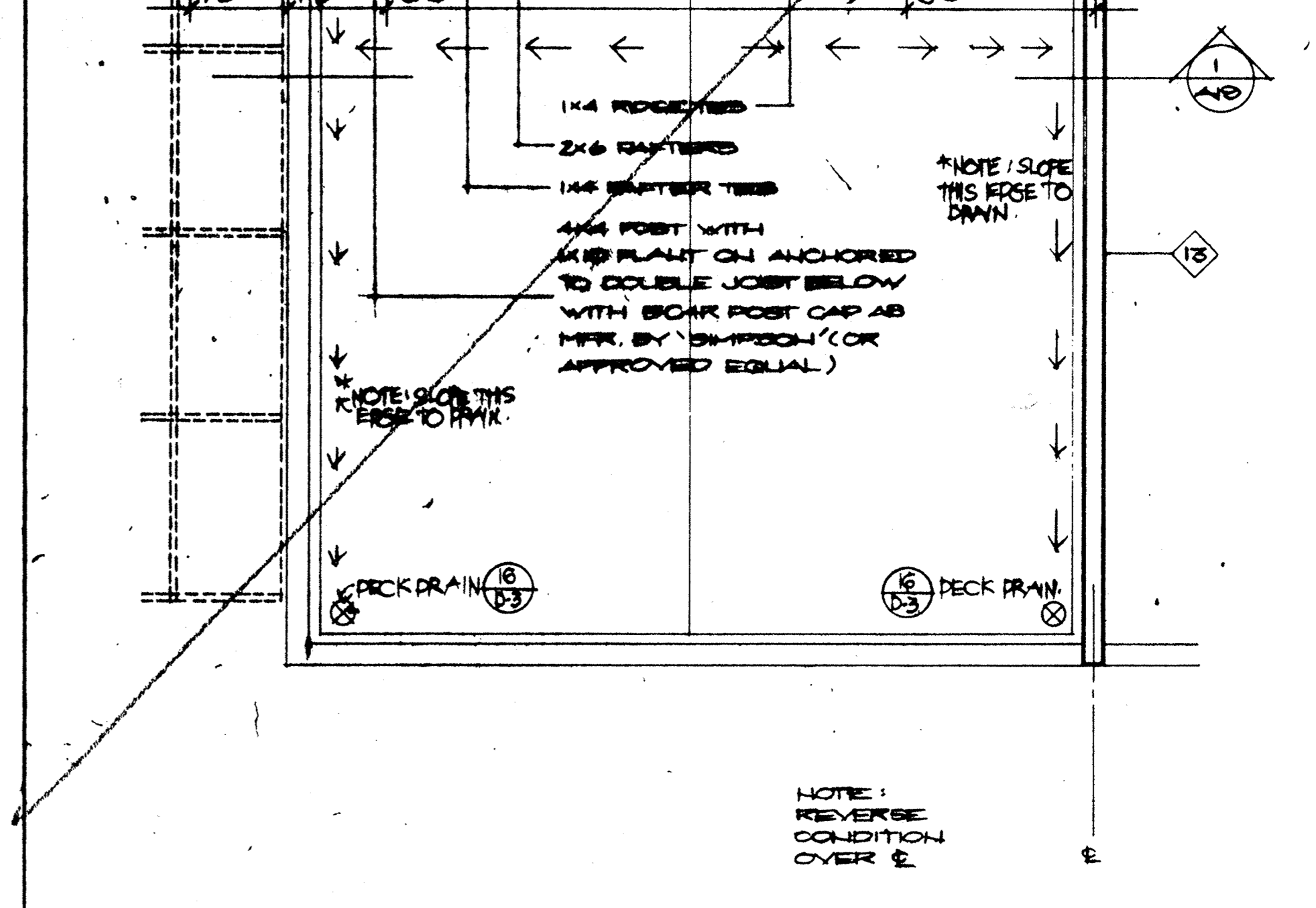
SECTION 1/2" = 1'-0"



ELEVATION 1/2" = 1'-0"



SECTION 1/2" = 1'-0"



TERRACE PLAN 1/2" = 1'-0"

MAY/86 P2 patio fences added and altered.

no.	date	by
revision		

Group: Architects and Planners L. Paul Zajten
 2885 E. 126th Highway
 Suite 303
 Corona del Mar, California
 92625
 (714) 975-2390

project title
U.C.S.B.

PATIO CHANGE
 sheet title
TERRACE / PATIO PLANS SECTIONS & DETAILS

scale	AS NOTED	date	4/26/85
drawn	P.L.S.	checked	
project no.	106	sheet no.	A 19

PATIO

This drawing, as an instrument of service, is the property of the architect and may not be reproduced without their permission and unless the reproduction carries their name. All designs and other information shown on this drawing are for use on the specified project only and shall not be used otherwise without written permission of the architect.

Written dimensions shall have precedence over scaled dimensions. Contractors shall verify and be responsible for all dimensions and conditions on the job and the architect shall be informed of any variations from the dimensions and conditions shown on the drawing. Shop drawings shall be submitted to the architect for approval before proceeding with fabrication.