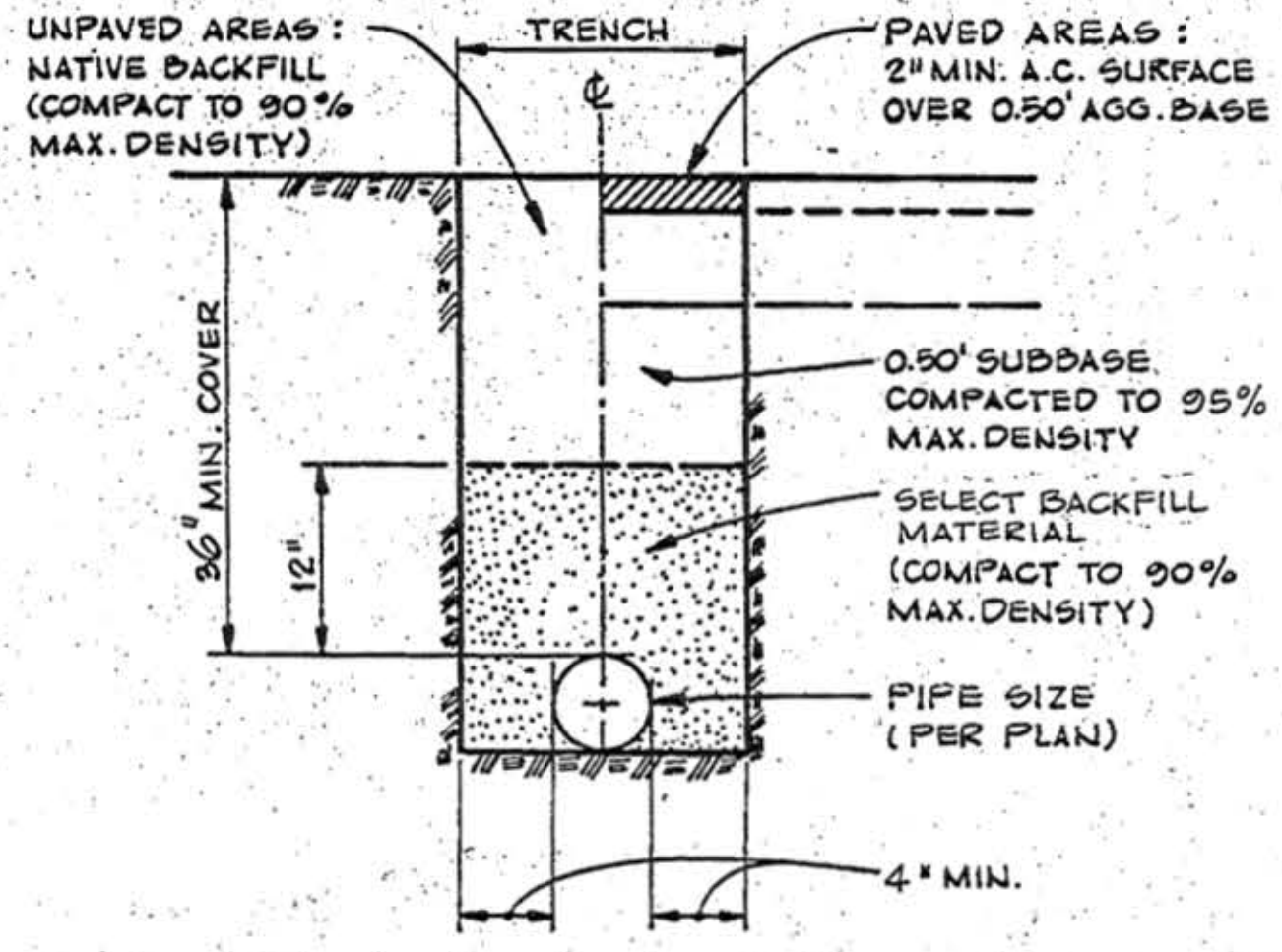
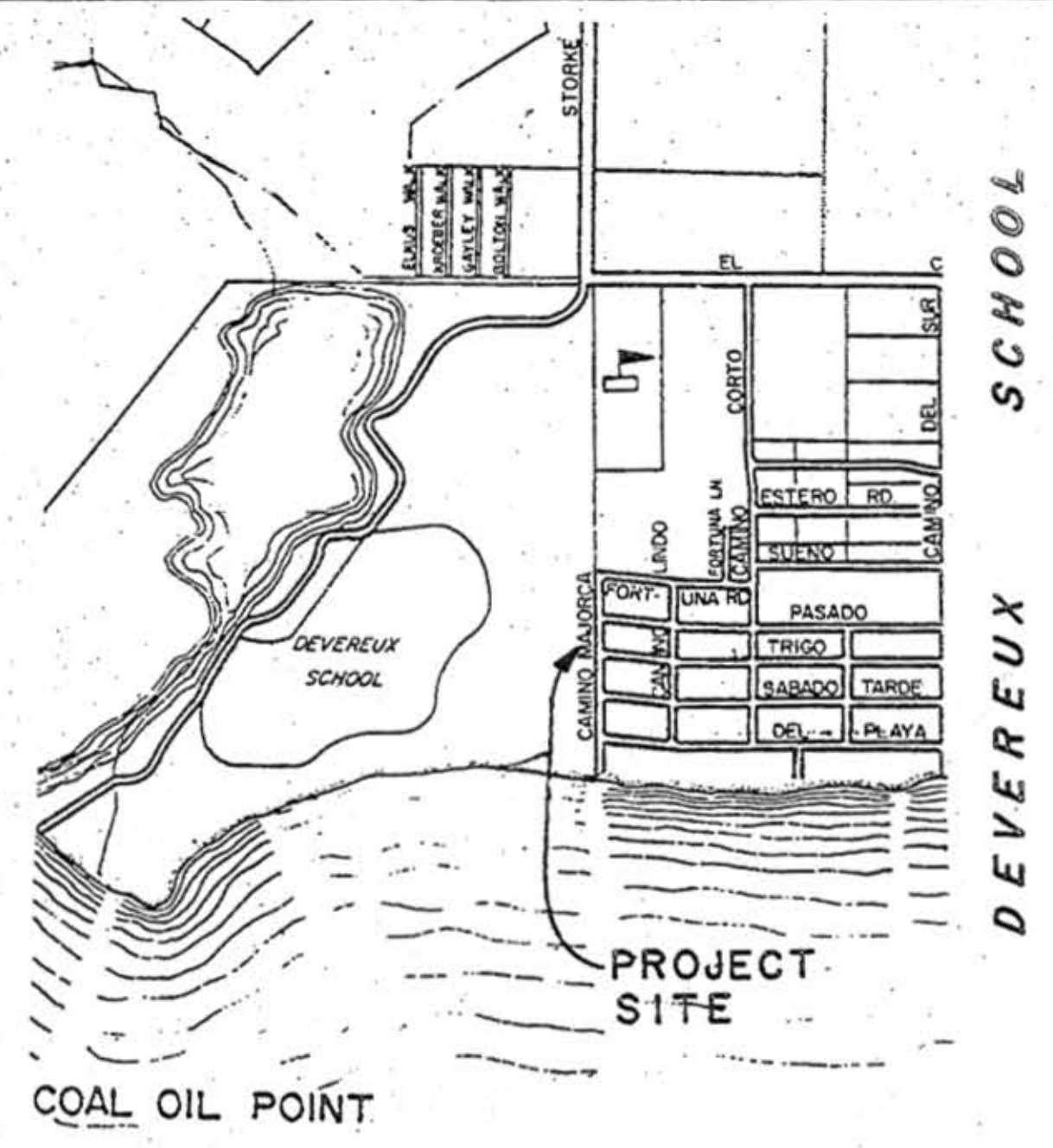


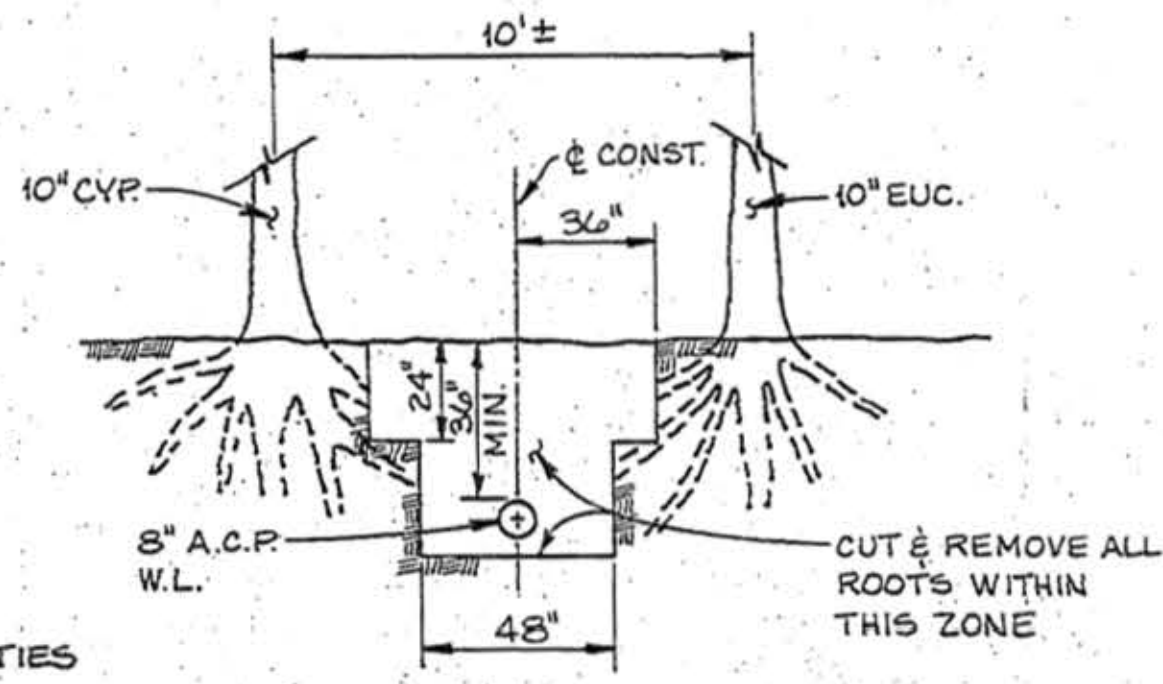
PROFILE
SCALE: HORIZ. 1" = 40'
VERT. 1" = 4'



TRENCHING DETAIL
SCALE: 1" = 1'

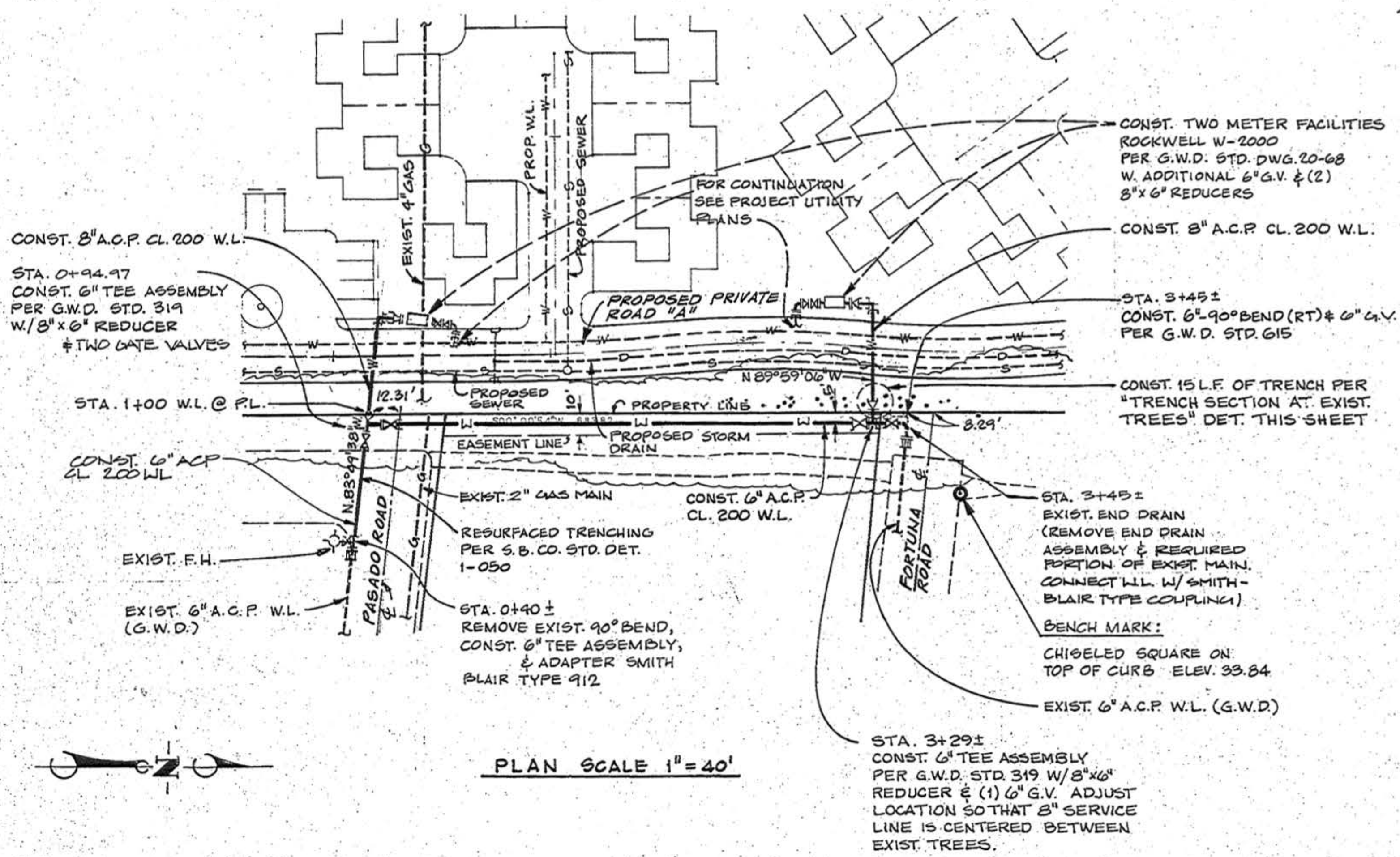


VICINITY MAP
SCALE: 1" = 1,000'



TRENCH SECTION AT EXIST. TREES
SCALE: 1" = 4'

- NOTES**
1. ALL WATER WORKS SHALL BE DONE IN ACCORDANCE WITH THE "STANDARD PLANS AND SPECIFICATIONS" OF THE GOLETA WATER DISTRICT.
 2. PRIOR TO INSTALLATION OF WATER MAINS, STREETS AND ALL AREAS TO BE PAVED SHALL BE BROUGHT TO WITHIN 6 INCHES OF SUBGRADE, AND SHALL BE FREE OF DEBRIS AND OTHER ENCUMBRANCES. SUBGRADE IS DEFINED AS THAT ELEVATION EQUAL TO FINISH STREET SURFACE ELEVATION LESS THE THICKNESS OF PAVEMENT AND BASE MATERIAL.
 3. LAY NO. 8 CABLE ON TOP OF NEW A/C PIPE.



PLAN SCALE 1" = 40'

COPIED
DEC 12 1985

DESIGNED BY R.N.G.			WATER MAIN EXTENSION		
CHECKED BY D.G.L.					
U.C.S.B. FACULTY HOUSING PROJECT			GOLETA WATER DISTRICT		
COUNTY OF SANTA BARBARA, CALIFORNIA			R.C.E. 32,187 DATE 2-23-85		
DATE	REVISION DESCRIPTION	APPD	 Penfield & Smith ENGINEERS INC. 111 EAST VICTORIA ST. • SANTA BARBARA, CAL. 93101 • 805-963-9327		
8-15-85	REVISED METER LOCATION	R.N.S.			
12-17-85	REVISED PIPELINE LOCATION	R.N.S.			
12-5-85	SECOND METER ADDED	R.N.S.			
APPROVED	BY	MGR. - GOLETA WATER DISTRICT	SHEET 1 OF 1 SHEETS		