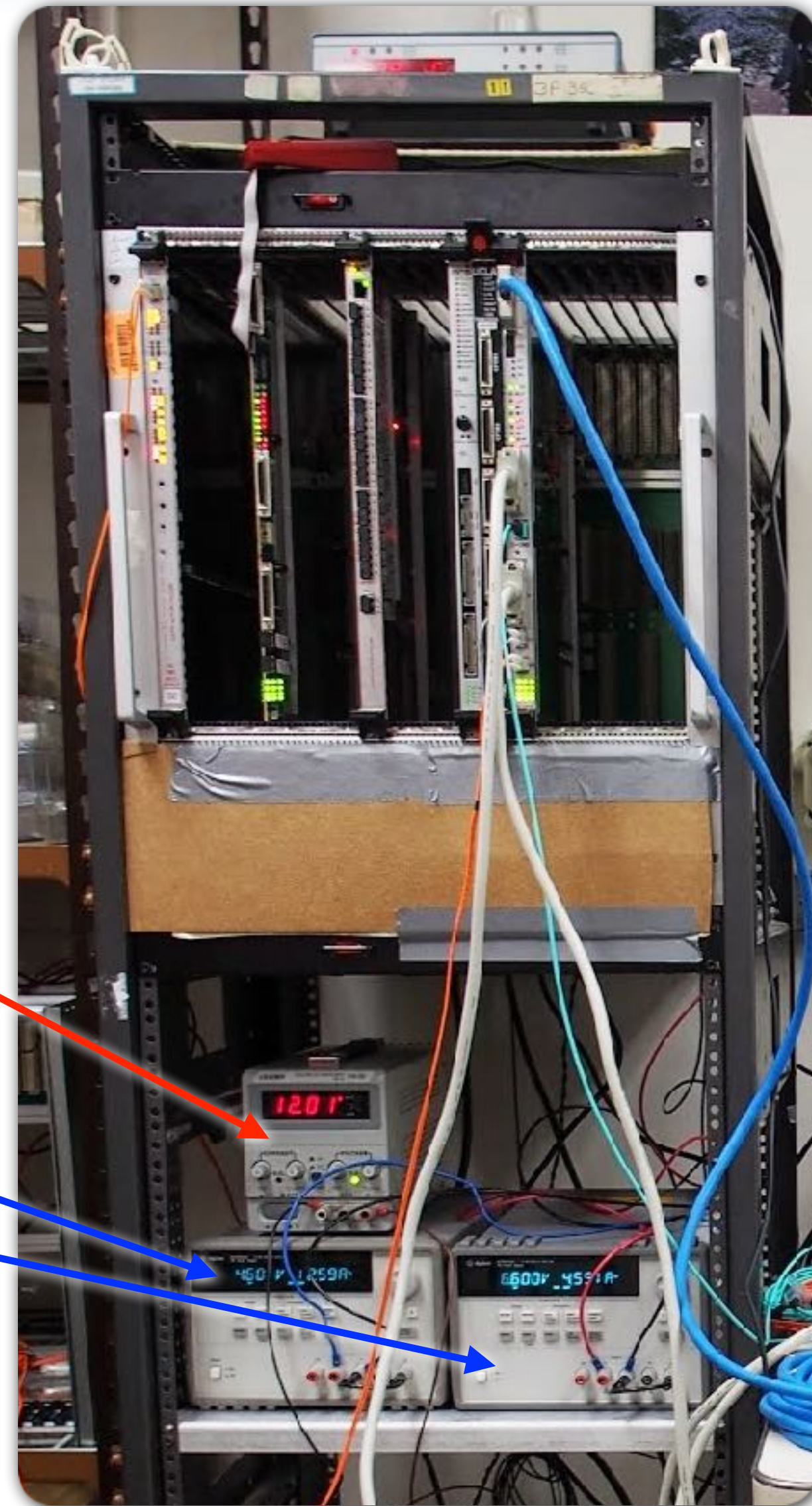
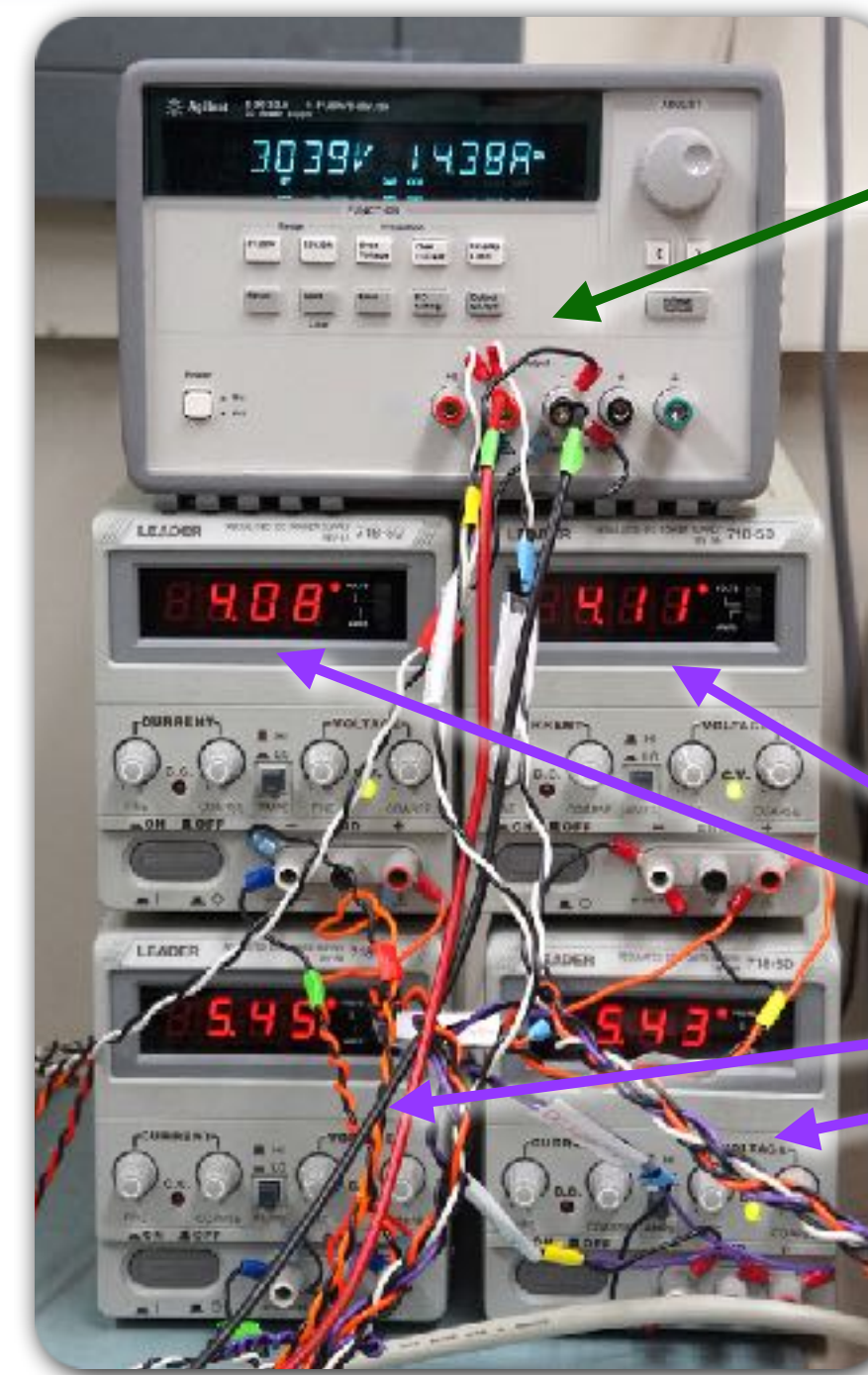


Turning on *ODMB* test stand



12 V supply to turn on fans.
Only needed if OTMB plugged in

These should be at 4.6 V (left) and 6.6 V (right).
Turn on by pressing:
- **On** button
- **Recall** button **twice**
- **Output** button



3 V supply to be turned on last
(otherwise, DCFEF FPGAs can get into a bad state).
Turn on by pressing:
- **On** button
- **Recall** button **twice**

4 V and 5.4 V supplies to be turned on before 3 V supply.
Simply press on button

- ~ **After crate is on, turn on Wimp** (linux machine with orange fiber connected to VCC)
 - ➔ In terminal, type “**mfs**” and then “**odmb**”
 - ➔ In firefox, go to <http://wimp.physics.ucsb.edu:9991/urn:xdaq-application:lid=20/>
 - * URL might have changed, shown in terminal after running “**odmb**”