

16 Project Organization, Management, and Operations

The LZ Project (the Project) is international in scope, funding, and organization. This chapter presents an overview of the overall Project organization, safety and risk programs, and the concept for operations. The integrated overall Project Management organization is also described here. This Project organization has the authority and responsibility over all aspects of the Project, including those funded by DOE, NSF, SDSTA, and non-U.S. agencies: the UK’s Science & Technology Facilities Council (STFC), Portugal’s Fundação para a Ciência e a Tecnologia (FCT), and any Russian- and Chinese-funded scope to be defined. The functions of the Project Advisory Board (PAB) are also described. A detailed discussion of Project Management, management systems, and approaches is described separately in the *Preliminary Project Execution Plan* (P-PEP) document.

16.1 LZ Project Organization

The Project’s organization from the perspective of DOE is summarized in Figure 16.1.1.

LBNL is the DOE lead laboratory for LZ. As lead laboratory, LBNL will be responsible for Project management and funding from DOE and for ensuring that essential manpower and necessary infrastructure are provided to the Project during the R&D and construction phases. The Project Manager and Project Scientist will be from the lead laboratory and will report to the Physics Division Director. These two Project positions must be jointly approved by LBNL and by the collaboration Executive Board (EB). The LBNL Project Management Office (PMO) will review and provide oversight of the Project and its management systems to ensure that all DOE project guidelines and procedures are followed.

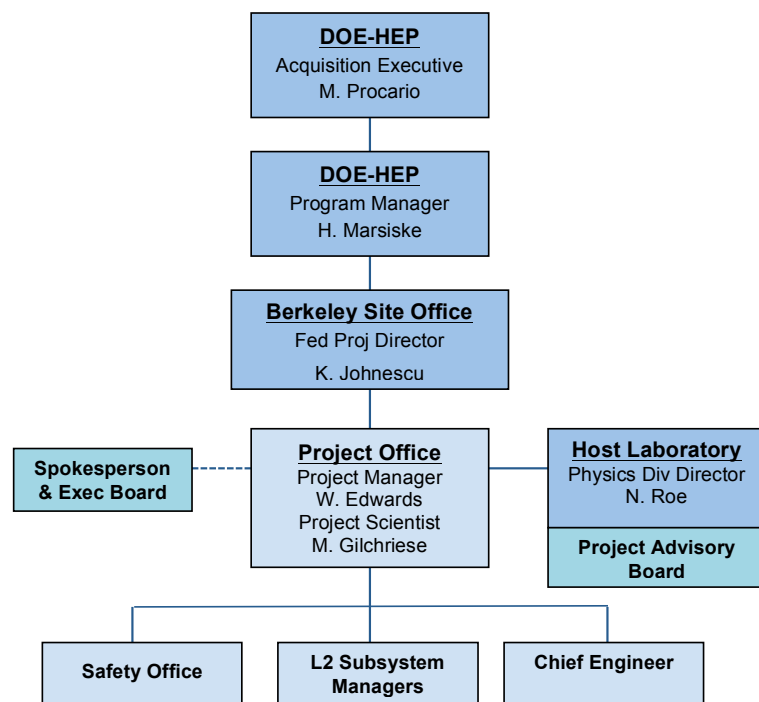


Figure 16.1.1. LZ Project reporting and responsibility organization chart, with an emphasis on the relationship to DOE.

Figure 16.1.2 presents the internal organization of the Project. The Spokesperson is elected by the collaborating institutes to represent the scientific interests of the collaboration. The roles and term of the Spokesperson are defined in a governance document. The current Spokesperson is Prof. Harry Nelson (University of California, Santa Barbara). The Spokesperson chairs the EB, which is a representative body of senior collaboration members. The EB will help guide the Project organization in its goal of delivering the experimental apparatus and software that will meet the scientific requirements of the LZ collaboration. An Institutional Board (IB), with representatives from each collaborating institution, meets regularly with the Spokesperson and Project team.

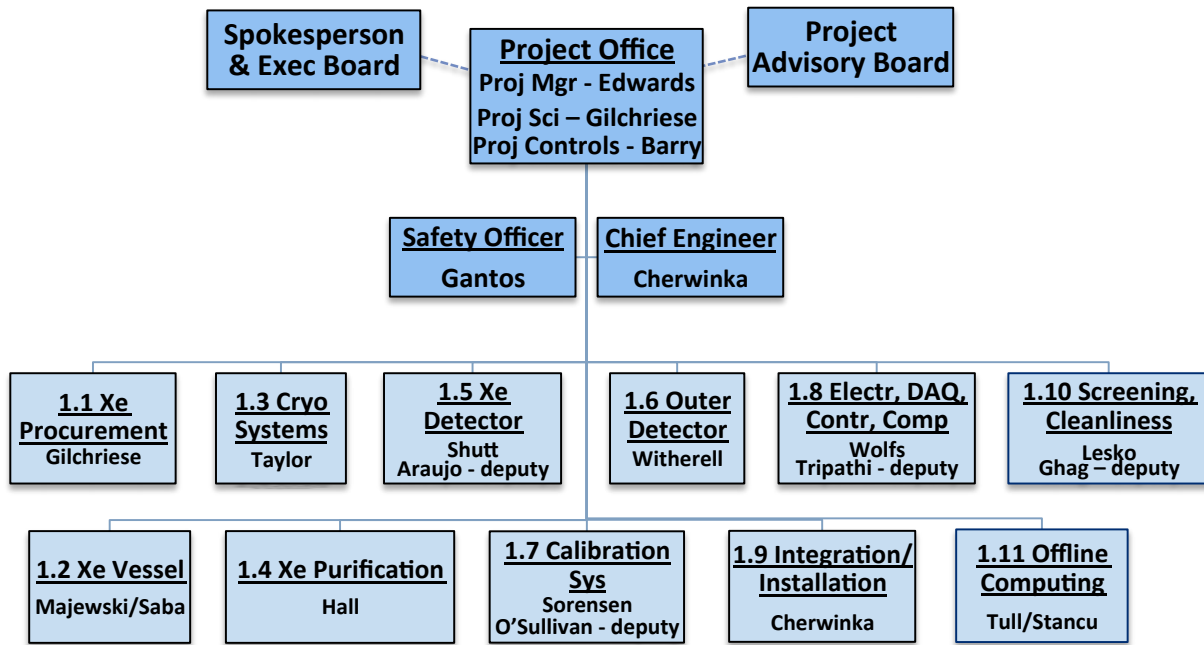


Figure 16.1.2. LZ project organization.

Project Advisory Board

The PAB is an external board, gathered from the U.S. and non-U.S. scientific communities, that has expertise in large scientific projects. This board will provide valuable guidance and advice to the Project over the course of the construction life cycle. The PAB is charged by, and reports to, the Physics Division Director of LBNL. The current members are: David McFarlane (SLAC-chair), Jay Marx (Caltech-retired), Chris Bebek (LBNL), Elaine McCluskey (Fermi National Accelerator Laboratory [FNAL]), Bob McKeown (Jefferson National Accelerator Facility [J-LAB]), Mark Thomson (Cambridge), and Dan Dwyer (LBNL). The PAB may be supplemented as required to provide advice on a specific subject and for specific reviews.

Project Management Office

The Project Management Office (PMO) personnel include Project Manager William Edwards (LBNL), Project Scientist Murdock Gilchriese (LBNL), Chief Engineer Jeff Cherwinka (Physical Sciences Laboratory, University of Wisconsin), Safety Officer Joseph Gantos (LBNL), and Project Controls Officer Michael Barry (LBNL). Systems engineering and QC/QA functions will also be under the direction of the Project Office.

Project Work Breakdown Structure

The LZ Work Breakdown Structure (WBS) has 12 major categories, as shown in Table 16.1.1.

Project Subsystem Organization

The current Subsystem Managers (at Level 2 of the WBS and selected Level 3 managers) and lead engineers are listed in Table 16.1.2. The LZ Technical Board comprises the WBS Level 2 Managers (**Bold**), their deputies, and the Project Office.

The Level 2 or Subsystem Managers, in addition to being members of the LZ Technical Board, are responsible for overseeing the development of the Project baseline with regard to their subsystems. They work with the Project Office to establish a level (L3) organization, helping to ensure that adequate technical resources have been identified, and defining the subsystem-specific requirements as they flow down from the overall Project. The L2 managers oversee the development of the technical design as well as the schedule and cost estimates associated with design, fabrication/execution, assembly, and test of

Table 16.1.1. LZ Work Breakdown Structure (WBS) shown at L2 and description of what each element covers.

| WBS | WBS Title | WBS Description |
|------|--|---|
| 1.1 | Xenon Procurement | Specification and procurement of the Xe necessary for the LZ experiment. Xe Storage & Transportation Vessels are covered in WBS 1.4, <i>Xe Purification & Handling</i> . |
| 1.2 | Xenon Vessel (Cryostat) | Labor, materials, and equipment associated with the design, prototyping, materials selection, construction, certification, and delivery, as well as planning and oversight of assembly and testing efforts on site, for the Cryostat Vessel System, its tanks, connecting flanges, insulation, and support structures. |
| 1.3 | Cryogenic Systems | Labor, materials, and equipment associated with the design, further prototyping, procurement, construction, assembly, testing, and delivery of the liquid nitrogen Cryogenic System and nitrogen purge system. |
| 1.4 | Xenon Purification & Handling | Labor, materials, and equipment associated with the production of high-purity LXe, its storage, delivery to, and recovery from the TPC. This element covers the online purification system, the Xe purity analysis systems, and the automated fail-safe Xe recovery system. A major subcomponent of this element is the stand-alone krypton-removal system, which will be used to purify the Xe prior to experimental operations. |
| 1.5 | Xenon Detector | Labor, materials, and equipment associated with the design, prototyping, fabrication, testing, and assembly planning for the central Xe Detector. This element covers the central detector region with its PMTs and the accompanying field-shaping electrodes and reflecting walls. It includes the “skin” veto region outside the main TPC volume and its PMTs. Included are the cathode, anode, and gate HV power supplies and the cathode HV umbilical connection to the TPC cathode and the grid structures, as well as the internal Xe liquid fluid system that brings liquid into the TPC region, providing cooling surfaces for temperature control. Also included is monitoring equipment for temperature, pressure, fluid flow, and other necessary measurements. |
| 1.6 | Outer Detector System | Labor, materials, and equipment associated with the design, fabrication, testing, and assembly planning for the Outer Detector system. This includes the acquisition of the acrylic vessels, construction of the scintillator filling system, the acquisition and testing of the Outer Detector PMTs, the mixing and handling of the gadolinium-loaded liquid scintillator, procurement of reflector materials, as well as all the support infrastructure required. It also includes the planning, procedures, and oversight, plus the installation tooling required during the assembly of the system inside the water tank. |
| 1.7 | Calibration | Labor, materials, and equipment associated with the design, prototyping, construction, delivery, assembly, and testing, of the Calibration System for the Xe detector and the Outer Detector system, along with the mechanisms, plumbing, valves, and radiation sources required to implement the calibration systems. Included are safety and administrative custodial requirements for source security, handling, and shipping. |
| 1.8 | Electronics, DAQ, Controls, Computing | Labor, materials, and equipment associated with the design, prototyping, construction, delivery, assembly, and testing of the analog and digital electronics for the Xe and Outer Detector PMTs, the DAQ and Trigger systems, the PMT HV system, the Detector Control system, and the online and offline hardware and software. This element includes the external signal, PMT HV, and network cables. Not included are the internal HV and signal cables for the PMTs (covered by WBS 1.5) and the detector sensors/instruments required for Detector Control. This element provides standard interfaces for detector sensors/instruments; custom interfaces required to connect custom sensors/instruments to the Detector Control system will not be provided by this element. |
| 1.9 | Integration & Installation | Labor and materials necessary to integrate the design effort of the subsystems into an overall detector design, maintain CAD models of the LZ detector and Davis Campus, upgrade the SURF infrastructure to support the detector assembly and operation, and perform on-site surface-level assembly of the detector and installation into the Davis campus underground. Other subsystem elements maintain the responsibility to support integration by communicating design requirements, interface issues, subsystem CAD models, infrastructure needs, and assembly and operation needs. WBS 1.9 supplies planning, management, and skilled labor for assembly and installation, and the subsystems supplies experts on site to support this as needed. |
| 1.10 | Cleanliness & Screening | Labor, materials, and equipment associated with specification of radioactive background-level tolerances in the experiment; material radioassaying and control of radioactive background contaminants in the Xe resulting from component outgassing; control of ambient radioactivity; and establishing cleanliness controls, monitoring, and maintenance procedures for manufacture, transport, storage, handling, assembly, and integration of detector components. |

| | | |
|-------------|---------------------------|---|
| 1.11 | Offline Computing | Software professional labor and computing hardware needed to begin operations of the LZ experiment. Interface to collaboration responsibilities for data processing, analysis, and simulation software. |
| 1.12 | Project Management | The cost of labor, travel, and materials necessary to plan, track, organize, manage, maintain communications, conduct reviews, and perform necessary safety, risk, and QA tasks during all phases of the project. Subsystem-related management and support activities for planning, estimating, tracking, and reporting as well as their specific EH&S and QA tasks are included in each of the subsystems. |

Table 16.1.2. The LZ Project Level 2 and 3 managers and lead engineers.

| WBS | Description | L2/3 Manager | Deputy or Co-mgr. | Lead Engineer |
|-------------|--|---|------------------------------|-----------------------------|
| 1.1 | Xe Procurement | M. Gilchriese (LBNL) | | |
| 1.2 | Xe Vessel | P. Majewski (RAL) | J. Saba (LBNL) | E. Holtom (RAL) |
| 1.3 | Cryogenic System | D. Taylor (SDSTA) | | |
| 1.4 | Xe Purification | C. Hall (UMd) | | W. Craddock (SLAC) |
| 1.4.1 | Xenon Screening | C. Hall (UMd) | | |
| 1.4.2 | Kr Removal | D. Akerib (SLAC) | | |
| 1.4.5 | Xe Gas Recirculation | J. Cherwinka (UW-PSL) | | |
| 1.4.6 | Liquid Xe Tower | W. Craddock (SLAC) | | |
| 1.5 | Xe Detector | T. Shutt (SLAC) | H. Araujo (Imperial) | J. Saba (LBNL) |
| 1.5.1 | Cathode High Voltage | D. McKinsey (Yale) | | W. Waldron (LBNL) |
| 1.5.2 | US PMT Systems | R. Gaitskell (Brown) | | |
| 1.5.3 | UK PMT Systems | H. Araujo (Imperial) | | |
| 1.5.4 | TPC | R. Webb (TAMU) | | J. Saba (LBNL) |
| 1.5.5 | Xe Monitoring System | H. Kraus (Oxford) | | |
| 1.5.6 | Internal Fluid System | T. Shutt (SLAC) | | |
| 1.5.7 | System Test | K. Pallidino (SLAC) | | |
| 1.5.8 | Assembly and Installation | J. Saba (LBNL) | | |
| 1.6 | Outer Detector System | M. Witherell (UCSB) | | S.Kyre/D.White(UCSB) |
| 1.6.1 | Scint. Vessels | S. Kyre (UCSB) | | |
| 1.6.4 | Liquid Scint. | M. Yeh (BNL) | | |
| 1.6.5 | Water Tank | D. White (UCSB) | | |
| 1.6.6 | PMT Supports | D. White (UCSB) | | |
| 1.6.7 | PMTs | S. Fiorucci (Brown) | | |
| 1.7 | Calibration System | P. Sorensen (LBNL) | K. O'Sullivan(Yale) | |
| 1.7.1 | Internal Radioact Sources | S. Hertel (Yale) | | |
| 1.7.2 | External Radioact Sources | K. O'Sullivan (Yale) | | |
| 1.7.3 | Mono-energetic N Source | K. O'Sullivan (Yale) | | |
| 1.7.4 | Low-energy nuclear recoil | P. Sorensen (LLNL) | | |
| 1.8 | Electr., DAQ, Controls, Computing | F. Wolfs(URochester) | M. Tripathi (UCDavis) | |
| 1.8.1 | Analog Electronics | M. Tripathi (UCDavis) | | R. Gerhard (UCDavis) |
| 1.8.2 | Trigger Electronics | E. Druskiewics (URochester) | | E. Druskiewics (URochester) |
| 1.8.3 | Data Acquisition System | W. Skulski (URochester) | | W. Skulski (URoch.) |
| 1.8.4 | Eternal PMT HV, Signal | F. Wolfs (URochester) | | |
| 1.8.5 | Slow Control | V. Solovov (Coimbra) | | |
| 1.8.7 | Online HW | J. Buckley (Washington U) | | |
| 1.8.8 | Online SW | J. Buckley (Washington U) | | |
| 1.9 | Integration & Installation | J. Cherwinka (UW-PSL) | | |
| 1.10 | Cleanliness and Screening | K. Lesko (LBNL) | C. Ghag (UCL) | |
| 1.10.1 | Fixed Contam. Matl Screen | A. Murphy (Edinburgh) | | |
| 1.10.2 | Radon Emanation Screen. | R. Schnee (SDSMT) | | |
| 1.10.3 | Other Screening | C. Hall (UMd) | | |
| 1.10.4 | Cleanliness, Maintenance | J. Busenitz (UAlabama) | | |
| 1.10.5 | Information Repository | J. Busenitz (UAlabama) | | |
| 1.11 | Offline Computing | I. Stancu (UAlabama), C. Tull (LBNL) | | |
| 1.11.1 | U.S. Data Center | C. Tull (LBNL) | | |
| 1.11.2 | UK Data Center | T. Sumner (Imperial) | | |
| 1.11.3 | Infrastructure Software | S. Patton (LBNL) | C. Faham (LBNL) | |
| 1.11.4 | Simulations | S. Fiorucci (Brown) | P. Beltrame (Edinburgh) | |
| 1.11.5 | Analysis Software | A. Curry (Imperial) | M. Szydagis (SUNY Albany) | |
| 1.11.6 | Subsystem Integration and Validation | S. Patton (LBNL) | M.E. Monzani (SLAC) | |
| 1.11.7 | Subsystem Management | I. Stancu (UAlabama), C. Tull (LBNL) | | |
| 1.12 | Project Management | W. Edwards (LBNL) | | |

their subsystems. They are also responsible for producing design reports and internal and external reviews. Ultimately, they are responsible for executing the Project Plan with respect to their subsystems. Design reviews are held for all relevant subsystems and are organized by the Project Office. Each major subsystem and procurement will undergo multiple reviews as the design of the particular subsystem matures and reaches readiness for construction.

16.2 Safety

Personnel safety and protecting the environment, as well as equipment safety, are high priorities for the LZ Project. Its scientific goals cannot be achieved without an effective safety and environmental protection program that is integrated into the overall management of the experiment. The details of the ES&H organization are described in an *Integrated Safety Management* document. A separate *Preliminary Hazard Analysis* (PHA) describes the hazards that will be encountered and their associated controls during the execution of the Project. This PHA document received significant input from the L2 subsystem managers who are, and will remain, closely involved in identifying and mitigating these hazards. Many hazards will be similar to those found in past operation of similar experiments (e.g., LUX and Daya Bay). The LZ Project work will take place at multiple institutions in addition to LBNL. Safety of the work at each institution will be the responsibility of the institution and work will be performed in accordance with the requirements and management systems of the home institutions. A sharing of lessons learned for the various locations is expected. Additionally, the LZ Project team will assist collaborating institutions as requested to address any hazard concerns.

Final assembly of the LZ experiment and its operation will take place at SURF, where integrated safety management is well established and will be employed in all phases. SURF ES&H rules and responsibilities will apply to all LZ activity at the SURF site, and SURF will provide safety training for all members of LZ who work on the site.

16.3 Risk

The LZ risk program has several key aspects. The first is the early identification of potential risks in each of the detector elements as well as the system as a whole. Second, an early R&D program focuses on understanding, reducing, or eliminating the identified risks. Third is the formal tracking of the remaining risks and mitigation strategies throughout the life of the experiment's construction phase. Last is an accounting for technical, cost, and schedule risk in developing the contingency analysis for the experiment. These first three components (ID, R&D, tracking) will be discussed in this chapter. A Risk Registry for LZ has been assembled and is updated regularly. A Risk Management Plan has also been written.

Risk Assessment and Tracking

Subsystem Managers have performed a risk assessment of their technical systems. These have been gathered by the Project Office and disseminated back out to the Subsystem Managers, key engineering leads, and the rest of the Project leadership team. Our preliminary *Risk Assessment and Mitigation Strategy* document contains a list of currently identified risks, as well as a further assessment of integrated or system-level risks. A summary list at the end of the document features the highest-priority (a combination of probability and consequence) risks. The *Risk Registry* will be reviewed and discussed regularly in subsystem and overall Project meetings. Updates to the *Risk Registry* will take place several times each year as the Project proceeds, as more information and experience are gathered and risk status changes.

Risk Mitigation

Several key Project risks can be addressed in the current R&D phase of the project. Therefore, a sizable

number of our current and planned R&D efforts are directed toward understanding and mitigating Project risks. Other risk areas require design and the manufacture of prototypes. These are all elements of the risk-mitigation strategy. We will apply the appropriate level of R&D, careful planning, and the judicious assignment of international labor resources within the Project to address all the Project's technical, cost, and schedule risks.

R&D Plans

In designing the LZ experiment, R&D efforts focus on developing suitable technologies and helping the collaboration make wise technology and cost decisions. These efforts are also very useful in understanding and reducing risk. The major R&D efforts have been described in previous chapters of this report.

16.4 Operations

Experiment Operations will be managed centrally from the PMO in much the same way the construction phase of the Project is managed. Our plan will be based on the successful experience operating the LUX detector at SURF and other projects. The Collaboration will provide much of the necessary resources for shifts and on-call experts. A small engineering and technical group will provide maintenance planning, oversight, and the resources for achieving them. A small computing and software maintenance group will ensure high availability of computing hardware and software and will support the Collaboration's data production and analysis activities.

In the case of LUX, DOE provides LBNL operating funds; NSF provides these funds to two universities. LBNL contracts with SDSTA for on-site support and with university groups to provide travel support to operate the experiment. LBNL also procures materials, supplies, and equipment in support of the experiment. In the case of LZ, the UK will provide substantial aspects of the experiment and may contribute to operations funds for them.

The elements of the LZ operations support are:

- **LBNL operations manager.** Oversight of budget and EH&S matters.
- **EH&S officer.** Provides review of ongoing procedures and EH&S. This is an LBNL position.
- **Engineering Support.** Provides engineering oversight during operations, particularly during the early phases of operations.
- **On-site EH&S officer.** Provides on-site EH&S oversight. In the case of LUX, this is an SDSTA employee under contract to LBNL.
- **On-site operations manager.** Provides on-site maintenance, support for consumables, and interface to SURF staff. The importance of this position in LZ will grow, compared to LUX, given the greater complexity of LZ. This will involve both operations aspects and technical support.
- **On-site procurement.** Materials, supplies, consumables (e.g., liquid nitrogen) under the management of the on-site operations manager.
- **Other procurement.** Materials, supplies, equipment necessary for operations and maintenance. Under the direction of the LBNL operations manager.
- **University travel support.** Support of travel to the site. Under the direction of the LBNL operations manager.
- **Computing support.** Support for professional services for computing hardware and software.

A detailed budget for LZ operations will be developed commensurate with the Critical Decision process. As a point of reference, the LUX operations budget in FY14 (during sustained data taking) is expected to be in the \$650K range, but a number of the functions needed for LZ (engineering, computing) are not supported. The LZ operations budget will be higher. We expect that with the added engineering and computing support, the budget will be in the range of \$1.5M to \$2.5M per year.